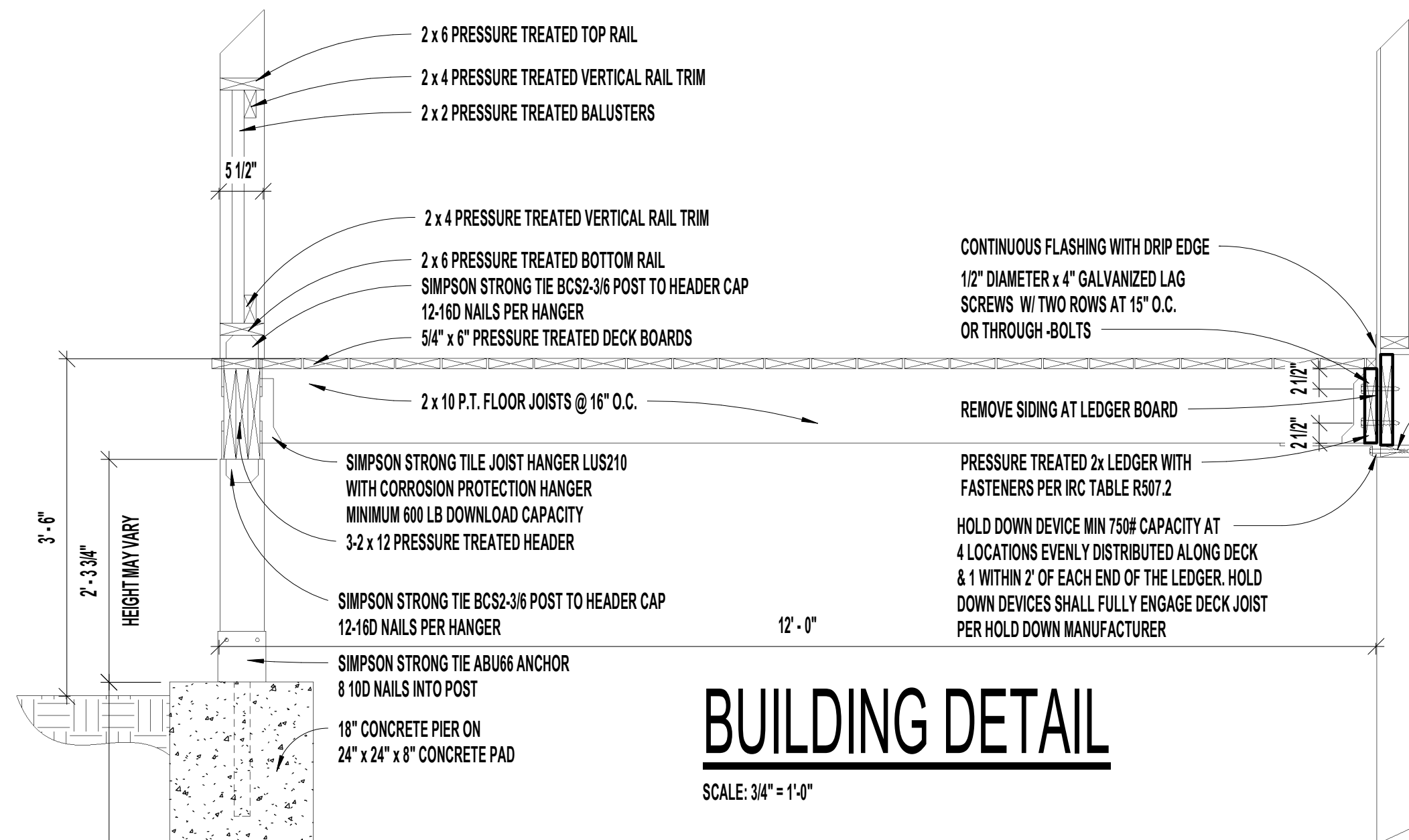


PLANS AND ELEVATIONS:  
A COMPLETE SET CONSISTS OF THE FOLLOWING  
SHEET #1 PLANS, ELEVATIONS, WALL BRACING, AND MATERIAL LISTS.  
SHEET #2 SECTIONS AND DETAILS.  
SHEET #3 SPECIFICATIONS

SINGLE TIER - GABLE - 12'-0" x 20'-0"



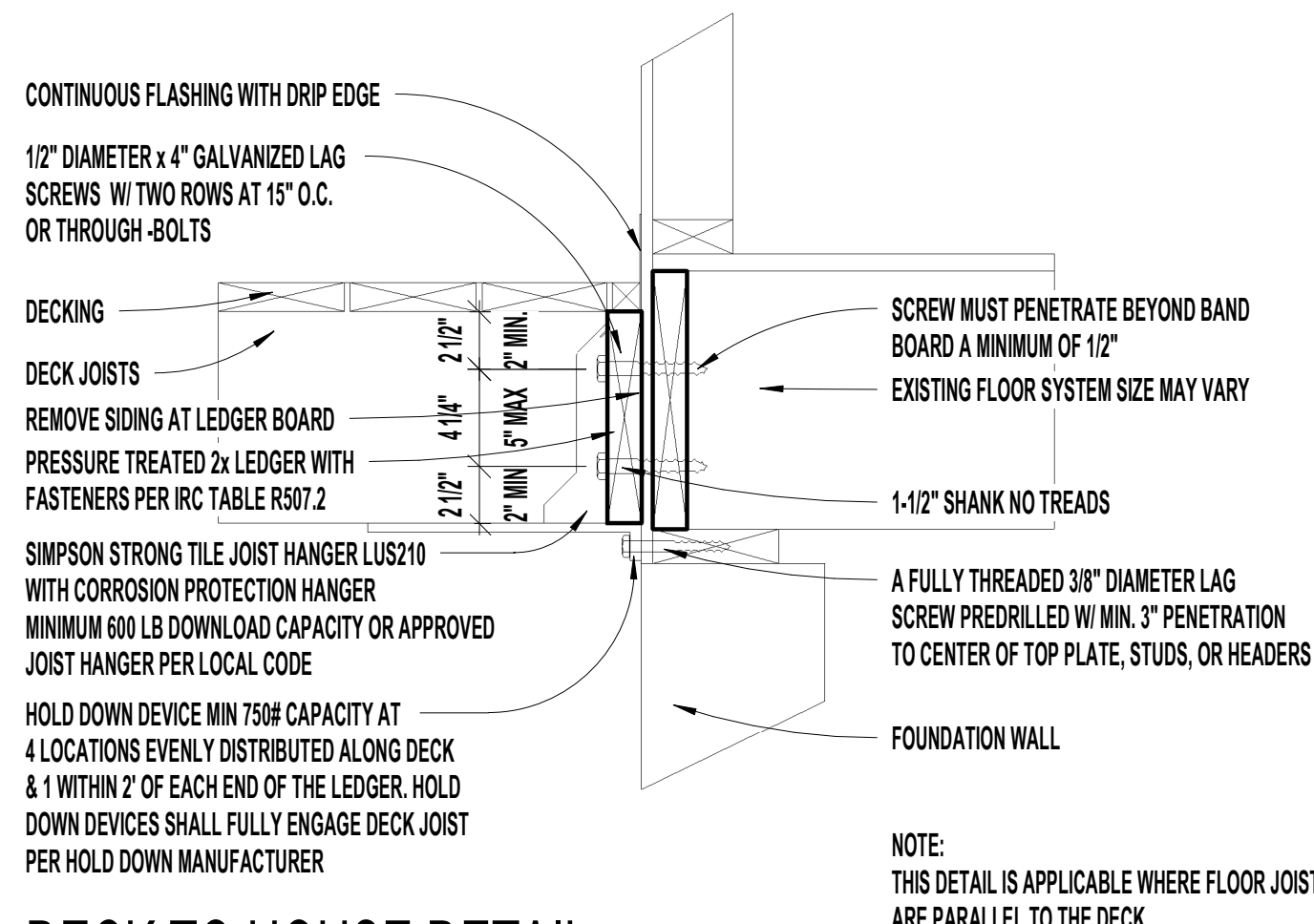


## BUILDING DETAIL

SCALE: 3/4" = 1'-0"

## VERTICAL SKYLIGHT DETAIL SECTION A-A

SCALE: 1 1/2" = 1'-0"



## DECK TO HOUSE DETAIL

SCALE: 1 1/2" = 1'-0"

VELUX SKYLIGHT UNIT W/ VELUX FLASHING KIT.  
FOR DETAILED INFORMATION, SEE COMBO-FLASHING  
INSTALLATION INSTRUCTIONS PROVIDED BY VELUX AMERICA LLC

SHINGLES TO MATCH EXISTING HOME.  
ICE AND WATER SHIELD ON ENTIRE ROOF.  
1/2" O.S.B. SHEATHING  
2 x 10 RAFTERS @ 16" O.C.

ALUMINUM GUTTERS AND DOWN SPOUTS  
DRIP EDGE FLASHING  
2 x 8 FASCIA BOARD  
SOFFIT AND FASCIA MATCH EXISTING  
2 x 4 LOOKOUTS AND LEDGER

3/8" LP SMART SIDE SOFFIT PLYWOOD  
3-2 x 10 PRESSURE TREATED HEADERS  
SIMPSON STRONG TIE BCS2-3/6 POST TO HEADER CAP  
12-16D NAILS PER HANGER

6 x 6 PRESSURE TREATED POST

2 x 6 PRESSURE TREATED TOP RAIL  
2 x 4 PRESSURE TREATED VERTICAL RAIL TRIM  
2 x 2 PRESSURE TREATED BALUSTERS

2 x 4 PRESSURE TREATED VERTICAL RAIL TRIM  
2 x 6 PRESSURE TREATED BOTTOM RAIL BOARD  
5/4" x 6" PRESSURE TREATED DECK BOARDS

SIMPSON STRONG TILE JOIST HANGER LUS210Z  
CONCEALED FLAGES HANGER  
WITH CORROSION PROTECTION HANGER  
MINIMUM 600 LB DOWNLOAD CAPACITY

SIMPSON STRONG TIE TENSION-TIE  
DTTZ CORROSION PROTECTION  
SIMPSON STRONG TIE BCS2-3/6 POST TO HEADER CAP  
12-16D NAILS PER HANGER  
6 x 6 PRESSURE TREATED COLUMN  
SIMPSON STRONG TIE ABU66 ANCHOR  
8 10D NAILS INTO POST

2 x 10 P.T. FLOOR JOISTS @ 16" O.C.  
3-2 x 12 PRESSURE TREATED HEADER  
SIMPSON STRONG TILE JOIST HANGER LUS210  
WITH CORROSION PROTECTION HANGER  
MINIMUM 600 LB DOWNLOAD CAPACITY

2 x 4 PRESSURE TREATED VERTICAL RAIL TRIM  
2 x 6 PRESSURE TREATED BOTTOM RAIL BOARD  
5/4" x 6" PRESSURE TREATED DECK BOARDS

SIMPSON STRONG TIE TENSION-TIE  
DTTZ CORROSION PROTECTION  
SIMPSON STRONG TIE BCS2-3/6 POST TO HEADER CAP  
12-16D NAILS PER HANGER  
6 x 6 PRESSURE TREATED COLUMN  
SIMPSON STRONG TIE ABU66 ANCHOR  
8 10D NAILS INTO POST

SIMPSON STRONG TILE JOIST HANGER HUC210-2  
CONCEALED FLAGES HANGER  
WITH CORROSION PROTECTION HANGER  
MINIMUM 600 LB DOWNLOAD CAPACITY

2 x 6 PRESSURE TREATED TOP RAIL  
2 x 4 PRESSURE TREATED VERTICAL RAIL TRIM  
2 x 2 PRESSURE TREATED BALUSTERS

3/8" LP SMART SIDE SOFFIT PLYWOOD  
3-2 x 10 PRESSURE TREATED HEADERS  
SIMPSON STRONG TIE BCS2-3/6 POST TO HEADER CAP  
12-16D NAILS PER HANGER

SHINGLES TO MATCH EXISTING HOME.  
ICE AND WATER SHIELD ON ENTIRE ROOF.  
1/2" O.S.B. SHEATHING  
2 x 10 RAFTERS @ 16" O.C.

ALUMINUM GUTTERS AND DOWN SPOUTS  
DRIP EDGE FLASHING  
2 x 8 FASCIA BOARD  
SOFFIT AND FASCIA MATCH EXISTING  
2 x 4 LOOKOUTS AND LEDGER

LIST OF MATERIALS FOR 20 x 12 VELUX COVERED PORCH		
ITEM	SIZE	QUANTITY
SKYLIGHTS:		
VELUX SKYLIGHTS	FS-M08	6 EACH
VELUX COMBI-FLASHING	EKL-M00-6001B	1 EACH
	EKL-M00-6002B	2 EACH
	EKL-M00-6003B	1 EACH
	EKL-012-6008-KB	4 EACH

DECK FRAMING:		
PRESSURE TREATED LEDGER BOARD	2 x 10 x 10'-0"	2 EACH
GALVANIZED LAG SCREWS	1/2" DIA. x 4"	32 EACH
CONTINUOUS FLASHING W/ DRIP EDGE	10'-0"	2 EACH
SIMPSON STRONG TIE JOIST HANGER	LUS210	34 EACH
WITH CORROSION PROTECTION		
SIMPSON STRONG TIE JOIST HANGER	HUC210-2	2 EACH
WITH CORROSION PROTECTION		
SIMPSON STRONG TIE JOIST HANGER	LUS210Z	4 EACH
WITH CORROSION PROTECTION		
SIMPSON STRONG TIE TENSION TIE	DTT12	4 EACH
WITH CORROSION PROTECTION		
PRESSURE TREATED FLOOR JOISTS	2 x 10 x 12'-0"	17 EACH
PRESSURE TREATED FLOOR JOISTS	2 x 10 x 12'-0"	3 EACH
PRESSURE TREATED FLOOR JOIST		
FOR BLOCKING	2 x 10 x 10'-0"	5 EACH
PRESSURE TREATED HEADER	2 x 12 x 20'-0"	3 EACH
PRESSURE TREATED HEADER	2 x 10 x 16'-0"	1 EACH
PRESSURE TREATED STRINGER	2 x 10 x 12'-0"	2 EACH
PRESSURE TREATED COLUMNS	6 x 6 x 10'-0"	2 EACH
(NOTE AMOUNT MAY CHANGE WITH GRADE HEIGHT)		
SIMPSON STRONG TIE POST ANCHOR	ABU66	5 EACH
SIMPSON STRONG TIE POST TO HEADER		
ANCHOR CORROSION PROTECTION	BCS2-3/6	5 EACH
PRESSURE TREATED DECK BOARDS	5/4" x 6" x 16'-0"	40 EACH
PRESSURE TREATED DECK BOARDS	5/4" x 6" x 16'-0"	10 EACH
FOR TREADS AND RAISERS		

WALL FRAMING		
PRESSURE POST	6 x 6 x 8'-0"	12 EACH
SIMPSON STRONG TIE POST TO HEADER	BCS2-3/6	24 EACH
PRESSURE TREATED SIDE HEADERS	2 x 10 x 14'-0"	6 EACH
PRESSURE TREATED END HEADERS	2 x 10 x 10'-0"	6 EACH
HANGER FRONT HEADER TO END HEADERS W/ CORROSION PROTECTION		
SIMPSON STRONG TIE HANGER	HUCQ410-SDS	2 EACH

RAILING:		
PRESSURE TREATED TOP RAIL	2 x 6 x 12'-0"	6 EACH
PRESSURE TREATED BOTTOM RAIL	2 x 6 x 12'-0"	5 EACH
PRESSURE TREATED VERTICAL RAIL	2 x 4 x 12'-0"	12 EACH
PRESSURE TREATED BALUSTERS	2 x 2 x 3'-0"	100 EACH
PRESSURE TREATED NEWEL POST	6 x 6 x 8'-0"	2 EACH

ROOF FRAMING:		
PRESSURE TREATED RAFTERS	2 x 10 x 12'-0"	28 EACH
PRESSURE TREATED END RAFTERS	2 x 10 x 12'-0"	2 EACH
PRESSURE TREATED RIDGE RAFTER	2 x 10 x 14'-0"	3 EACH
PRESSURE TREATED JACK RAFTERS	2 x 10 x 12'-0"	3 EACH
PRESSURE TREATED HEADERS	2 x 10 x 8'-0"	8 EACH
PRESSURE TREATED BLOCKING	2 x 10 x 12'-0"	1 EACH
	2 x 4 x 12'-0"	2 EACH
	2 x 10 x 14'-0"	9 EACH
RAFTER HANGERS	1-1/2 WIDE	28 EACH
PRESSURE TREATED FASCIA	2 x 8 x 14'-0"	2 EACH
ROOFING SHEATHING	1/2" O.S.B SHEATHING	12 SHEETS
LP SMART SIDE SOFFIT MATERIAL	3/8" x 4'-0" x 8'-0"	10 SHEETS

EXTERIOR MATERIALS:		
ICE AND WATER SHIELD	36" x 75'-0" ROLL	1 EACH
SHINGLES TO MATCH HOUSE	1 BUNDLE = 100 SQUARE FEET	4 EACH
VENT FLASHING	10'-0"	2 EACH
FASCIA	2 x 8 x 14'-0"	2 EACH
	2 x 8 x 12'-0"	2 EACH
SHINGLE STRIP	1 x 4 x 14'-0"	2 EACH
	1 x 4 x 20'-0"	2 EACH
SOFFIT MATERIAL TO MATCH EXISTING HOME OR BUILDERS CHOICE	3/8" x 4'-0" x 8'-0"	4 EACH
SOFFIT VENT	2 x 10'-0"	2 EACH

INTERIOR MATERIALS:		
PRESSURE TREATED BASEBOARD AT WALL COMMON WITH HOUSE	2 x 4 x 10'-0"	2 EACH

OTHER ITEMS:  
DOOR INTO SCREENROOM FROM HOME MAY NEED TO REPLACE OR A NEW ONE INSTALLED.  
FINISH FLOOR FINISH CAN VARY.  
STEP FROM HOUSE LEVEL TO SCREEN ROOM LEVEL.  
CONCRETE SLAB FOUNDATION AND FOOTING OR ANY FOUNDATION MATERIALS.  
ELECTRICAL LIGHTS, SWITCHES, OUTLETS, LOW VOLTAGE WIRE AND FANS  
HEATING AND AIR CONDITIONING.

VELUX ACCESSORIES:  
VELUX ACTIVE SYSTEM  
SOLAR BLINDS  
COPPER CLADDING AND FLASHING.

## BUILDING SECTION

SCALE: 3/4" = 1'-0"

## LEDGER DETAIL

SCALE: 1 1/2" = 1'-0"

THIS PLAN INCORPORATES GENERAL PROFESSIONAL AND INDUSTRY STANDARDS  
SOME REVISIONS MAY BE REQUIRED TO COMPLY WITH LOCAL BUILDING CODES AND  
ORDINANCES. THE BUILDER / CONTRACTOR IS SOLELY RESPONSIBLE FOR THE PROPER  
CONSTRUCTION AND MATERIAL LIST FOR THE BUILDING. THE BUILDER / CONTRACTOR  
HAS RIGHTS TO ADJUST THE MATERIALS USED PER THERE LOCATION AND  
MATERIALS USED ON THE EXISTING HOME.

PLANS AND ELEVATIONS:  
A COMPLETE SET CONSISTS OF THE FOLLOWING  
SHEET #1 PLANS, ELEVATIONS, WALL BRACING, AND MATERIAL LISTS.  
SHEET #2 SECTIONS AND DETAILS.  
SHEET #3 SPECIFICATIONS

# VELUX®

## The No Leak Skylight™

## SECTION & DETAILS

SINGLE TIER - GABLE - 12'-0" x 20'-0"



### OVER CONCRETE OR MASONRY BLOCK FOUNDATIONS



Technical drawing of a wall assembly showing framing anchors, nail sole plate, and wood structural panel sheathing. The drawing includes labels for 'Framing anchors', '670 lb', 'Nail sole plate to joist per table R602.3(1)', 'Wood structural panel sheathing over approved band joist', and 'Not to scale'.

Technical drawing illustrating the construction of a wood structural panel joint, showing two views: a side elevation and a cross-section.

**Side Elevation View:**

- Labels: "Nail sole plate to joist per table R502.3(1)" and "Wood structural panel sheathing over approved band joist".
- Dimensions: "Min. overlap 9-14"

**Cross-Section View:**

- Labels: "Bd Common nails 3" o.c. top and bottom".

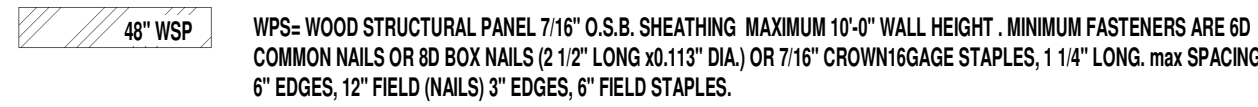
**Notes:**

- Not to scale

SCALE: 3/16" = 1'-0"



NOTES:  
SEE BUILDING SECTION FOR ADDITIONAL FRAMING DETAILS  
AND MATERIAL USED TO BUILD STRUCTURE.  
FOLLOW ALL INSTALLATION INSTRUCTIONS PROVIDED BY VELUX AMERICA LLC  
AND WINDOW MANUFACTURE FOR INSTALL.



**PF** PF = PORTAL FRAME WALL WITH 7/16" OSB SHEATHING SEE DETAIL ON PAGE FRO FRAMING.

FIRST FLOOR LEVEL 321.25-B  
20'-0" x 12'-0" ROUND UP TO 20'-0" x 12'-0"  
BRACING METHOD WSP, LIB AND PT FRAME.

321.25 (f) 1-CEILING 1-ROOF  $\leq 25$ =1 PANELS (12")

ADJUSTMENTS:

321.25 (f) (b) EXPOSURE	B	=1.0
321.25 (f) (c) WALL HEIGHT	9'-0"	=1.5
321.25 (f) (d) EAVE/PEAK	10'-0"	=.95
321.25 (f) (e) DW APPLIED	YES	=1.0
	PRODUCT	= .95

PANEL INTERPRETATION (321.25) (f) (a)

12'-0" (25'-0" x 1 = 48

APPLY ADJUSTMENTS:

LENGTH = 12'-0" = 48' x .95 = 456 PANELS ROUND UP TO 1 PANELS

ROUNDED PER 321.25 (f) (f)

FIRST FLOOR LEVEL 321.25-B  
20'-0" x 12'-0" ROUND UP TO 20'-0" x 12'-0"  
BRACING METHOD WSP, LIB AND PT FRAME.

321.25 (f) 1 CEILING 1 ROOF ≤ 25 = 1 PANELS (20')  
ADJUSTMENTS:  
321.25 (f)a EXPOSURE B = 1.0  
321.25 (f)c WALL HEIGHT 9'-0" = .95  
321.25 (f)d EAVE/PEAK 10'-0" = 1.0  
321.25 (f)e DW APPLIED YES = 1.0  
PRODUCT = .95

PANEL INTERPRETATION (321.25 (f)a  
20'-0"/25'-0" x 1 = 80  
APPLY ADJUSTMENTS:  
LENGTH = 20'-0" x .80 x .95 = .76 PANELS ROUND UP TO 1 PANELS  
ROUNDED PER 321.25 (f)



SCALE: 1/4" = 1'-0"



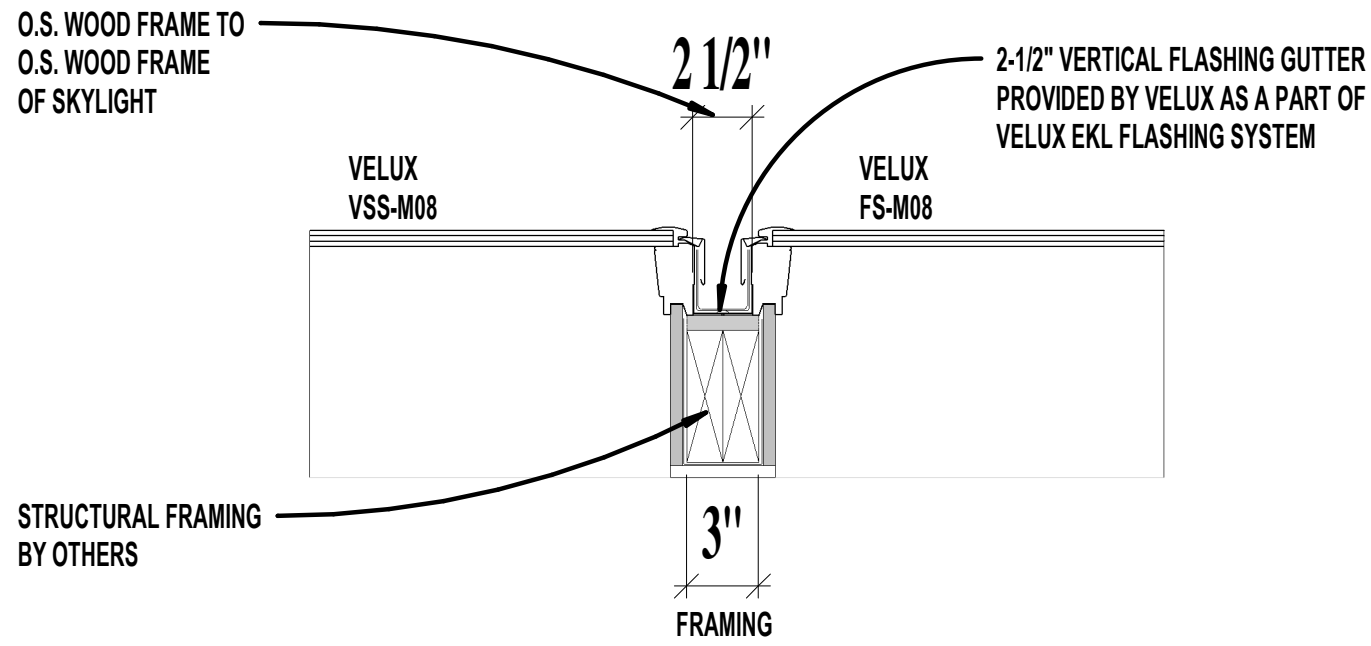
THIS PLAN INCORPORATES GENERAL PROFESSIONAL AND INDUSTRY STANDARDS. SOME REVISIONS MAY BE REQUIRED TO COMPLY WITH LOCAL BUILDING CODES AND ORDINANCES. THE BUILDER /CONTRACTOR IS SOLELY RESPONSIBLE FOR THE PROPER CONSTRUCTION, AND MATERIAL LIST FOR THE BUILDING. THE BUILDER/ CONTRACTOR HAS RIGHTS TO ADJUST THE MATERIALS USED PER THERE LOCATION AND MATERIALS USED ON THE EXISTING HOME.

PLANS AND ELEVATIONS:  
A COMPLETE SET CONSISTS OF THE FOLLOWING  
SHEET #1 PLANS, ELEVATIONS, WALL BRACING, AND MATERIAL LISTS.  
SHEET #2 SECTIONS AND DETAILS.  
SHEET #3 SPECIFICATIONS

**VELUX®**  
The No Leak Skylight™

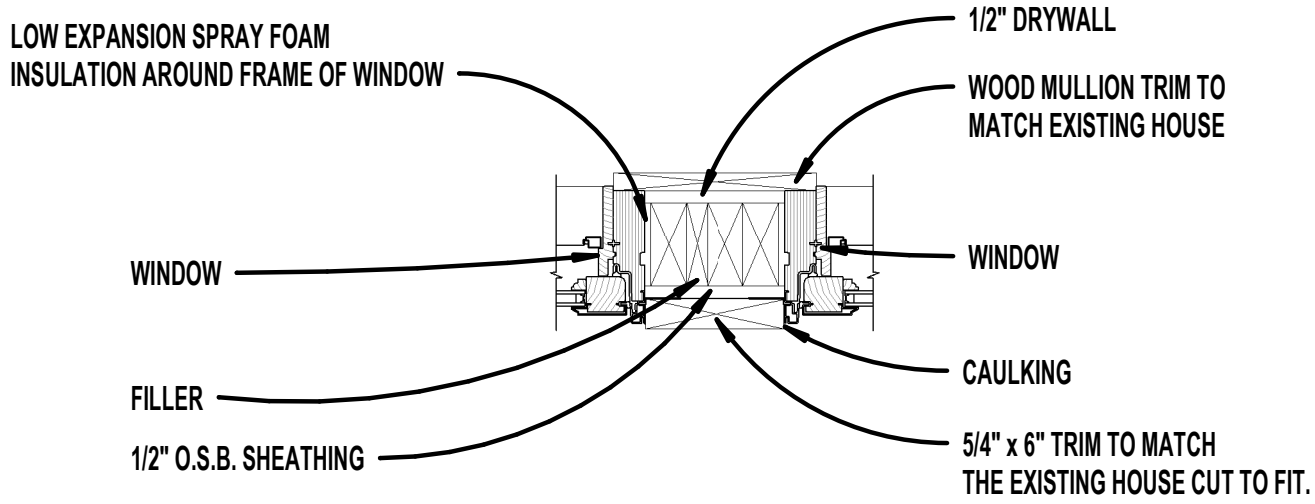
# VELUX SUNROOM





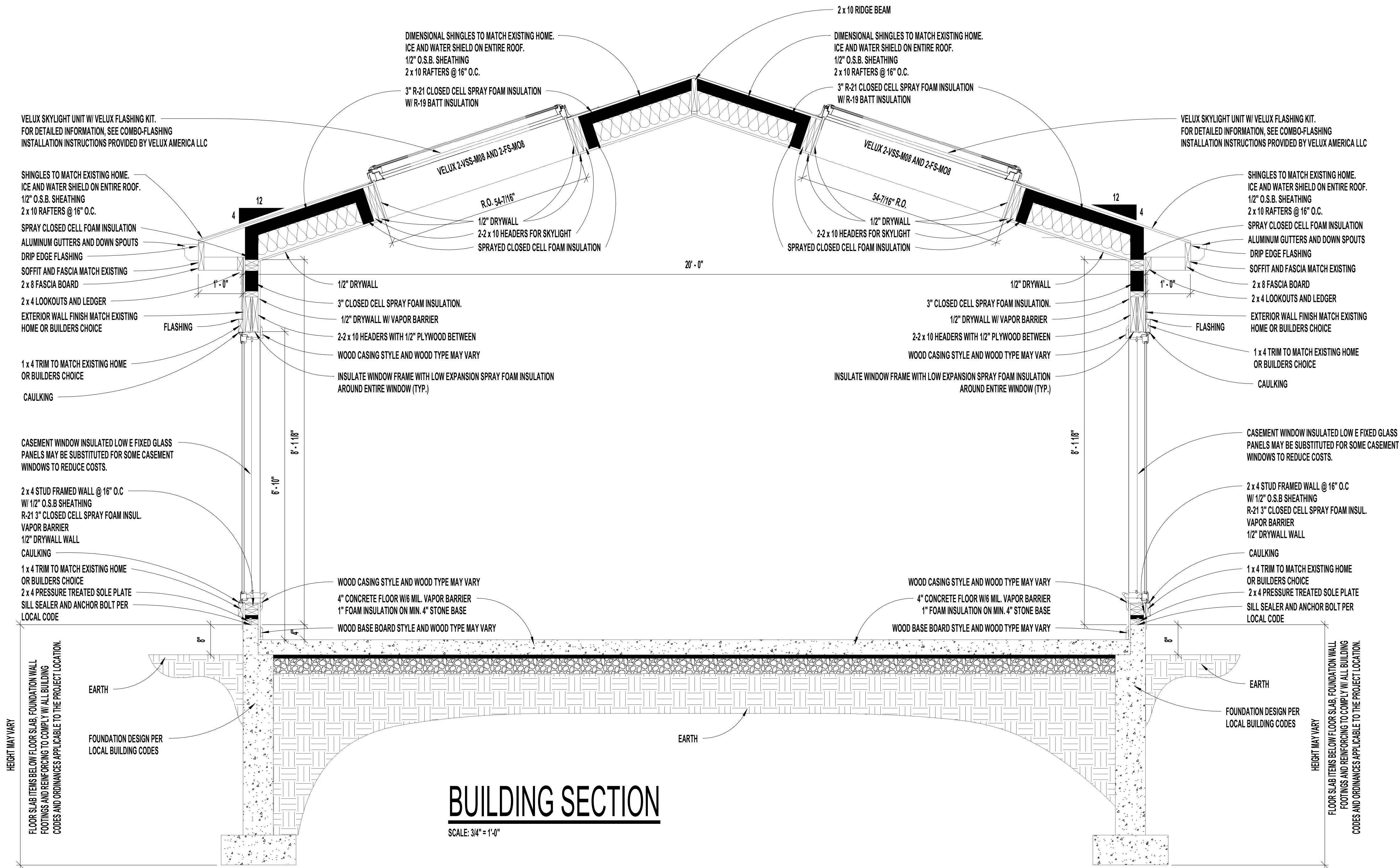
## VERTICAL SKYLIGHT DETAIL SECTION A-A

SCALE: 1 1/2" = 1'-0"



## WINDOW MULLION DETAIL

SCALE: 1 1/2" = 1'-0"



## BUILDING SECTION

SCALE: 3/4" = 1'-0"

LIST OF MATERIALS FOR 12 x 20 VELUX SUNROOM		
ITEM	SIZE	QUANTITY
<b>MILLWORK:</b>		
VELUX SKYLIGHTS	FS-M08	4 EACH
	VSS-M08	2 EACH
VELUX COMBI-FLASHING	EKL-M00-6001B	2 EACH
	EKL-M00-6002B	2 EACH
	EKL-M00-6003B	2 EACH
	EKL-012-6008-KB	4 EACH

CASEMENT WINDOW	28" x 72" CASEMENT	5 EACH
	56"x72" MULL CASEMENT	3 EACH
FRENCH DOOR	36" x 83"	1 EACH

<b>WALL FRAMING:</b>		
SILL SEALER	3-1/2" WIDE	44 LF
PRESSURE TREATED SOLE PLATE	2 x 4 x 10'-0"	2 EACH
PRESSURE TREATED SOLE PLATE	2 x 4 x 12'-0"	2 EACH
STUDS (PRE-CUT)	2 x 4 x 92'5/8"	64 EACH
STUDS FOR LOOKOUTS AND BLOCKING	2 x 4 x 92'5/8"	16 EACH
TOP PLATES	2 x 4 x 12'-0"	4 EACH
	2 x 4 x 16'-0"	3 EACH
SIDE WALL HEADERS	2 x 10 x 10'-0"	4 EACH
	2 x 4 x 16'-0"	3 EACH
END WALL HEADERS	2 x 12 x 16'-0"	2 EACH
FRAMING AT WINDOWS	2 x 4 x 12'-0"	6 EACH
WALL SHEATHING (O.S.B. SHEATHING)	1/2" x 4'-0" x 8'-0"	16 EACH

<b>ROOF FRAMING:</b>		
RAFTERS	2 x 10 x 12'-0"	28 EACH
END RAFTERS	2 x 10 x 12'-0"	2 EACH
RIDGE RAFTERS	2 x 10 x 14'-0"	1 EACH
JACK RAFTERS	2 x 10 x 12'-0"	3 EACH
HEADERS	2 x 10 x 8'-0"	8 EACH
BLOCKING	2 x 10 x 12'-0"	1 EACH
	2 x 4 x 12'-0"	2 EACH
	1 x 10 x 14'-0"	9 EACH
JOIST HANGERS	1-1/2 WIDE	28 EACH
SUBFASCIA	2 x 8 x 14'-0"	2 EACH
ROOFING SHEATHING (1/2" O.S.B. SHEATHING)	1/2" x 4'-0" x 8'-0"	12 SHEETS

<b>EXTERIOR MATERIALS:</b>		
ICE AND WATER SHIELD	36" x 75'-0" ROLL	1 EACH
SHINGLES TO MATCH HOUSE	1 BUNDLE = 100 SQUARE FEET	4 EACH
VENT FLASHING	10'-0"	2 EACH
FASCIA	1 x 8 x 14'-0"	2 EACH
	1 x 8 x 12'-0"	2 EACH
SHINGLE STRIP	1 x 4 x 14'-0"	2 EACH
	1 x 4 x 20'-0"	2 EACH
SOFFIT MATERIAL TO MATCH EXISTING HOME OR BUILDERS CHOICE	3/8" x 4'-0" x 8'-0"	5 EACH
SOFFIT VENT	2 x 10'-0"	2 EACH
FLASHING AT WINDOWS AND DOORS	VARIES WITH SIDING	50 LF

<b>INTERIOR MATERIALS:</b>		
GYPSUM BOARD	1/2" x 4'-0" x 12'-0"	17 SHEETS
CASING	2-1/4" COLONIAL OAK	284 LF
BASEBOARD	3 1/4" COLONIAL OAK	64 LF
DOOR STOP		1 EACH

<b>INSULATION AND VAPOR BARRIER:</b>		
WALL POLYETHYLENE VAPOR BARRIER	8'-0"	60 LF
3" R-21 CLOSED CELL SPRAY FOAM		276 SQ. FT.
INSULATION IN WALLS AND ROOF		
R-19 BATT INSULATION	16" WIDE BATTS	284 SQ. FT.

**OTHER ITEMS:**  
NEW EXTERIOR SIDING AND TRIM TO MATCH EXISTING EXTERIOR WALL FINISH AND TRIM DOOR INTO SUNROOM FROM HOME MAY NEED TO REPLACE OR A NEW ONE INSTALLED. FINISH FLOOR FINISH CAN VARY.  
STEP FROM HOUSE LEVEL TO SUNROOM LEVEL.  
CONCRETE SLAB FOUNDATION AND FOOTING OR ANY FOUNDATION MATERIALS.  
ELECTRICAL LIGHTS, SWITCHES, OUTLETS, LOW VOLTAGE WIRE AND FANS  
HEATING AND AIR CONDITIONING.

**VELUX ACCESSORIES:**  
VELUX ACTIVE SYSTEM  
SOLAR BLINDS  
COPPER CLADDING AND FLASHING.

# SECTION & DETAILS

SINGLE TIER - GABLE - 12'-0" x 20'-0"

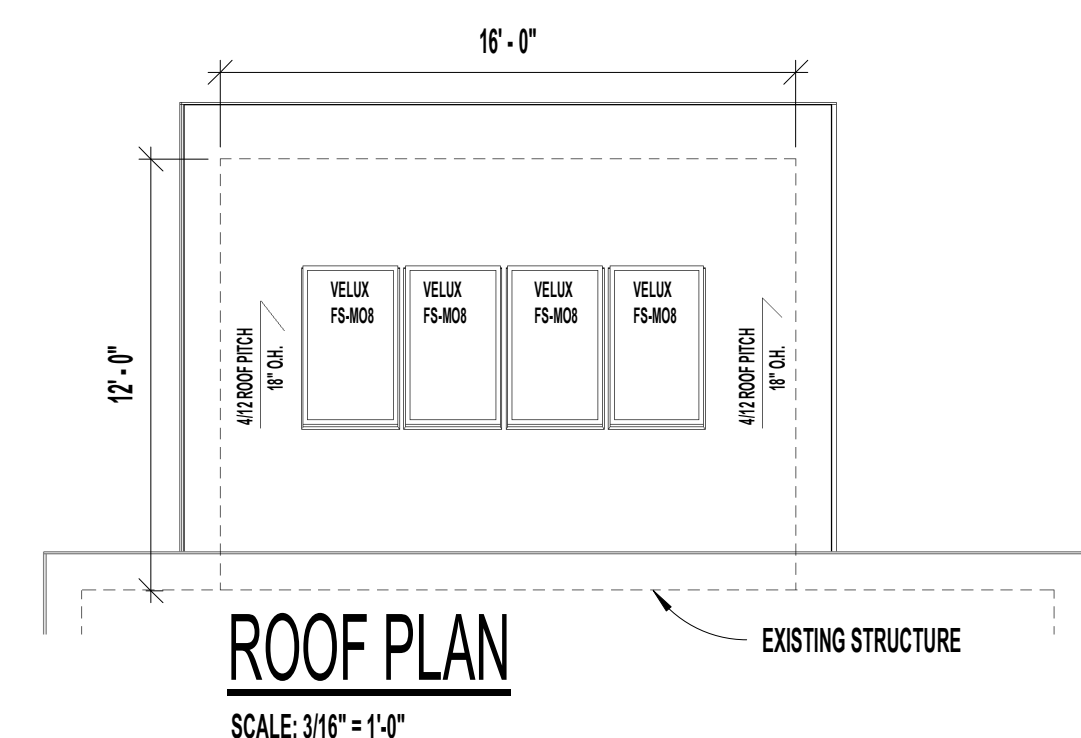
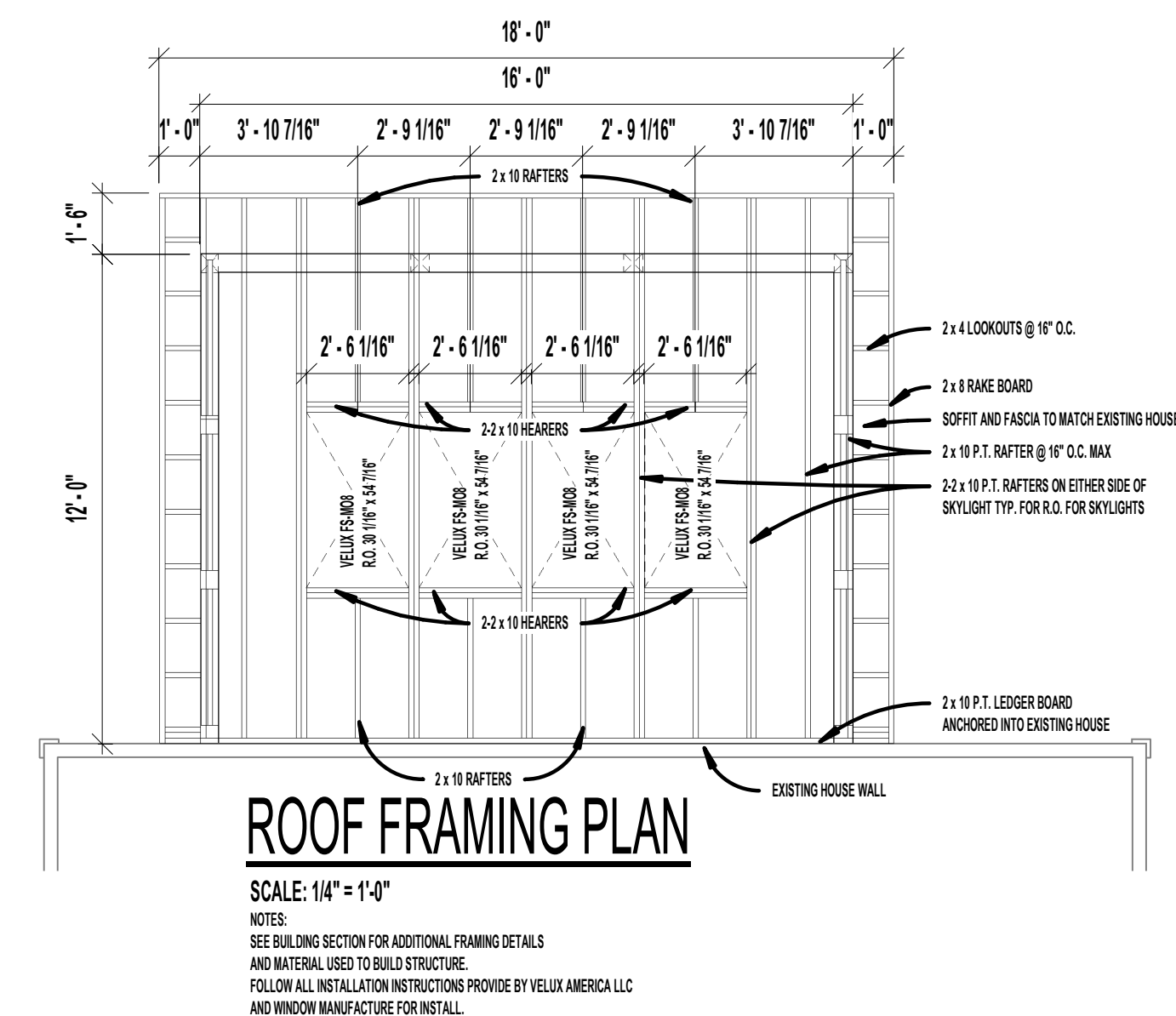
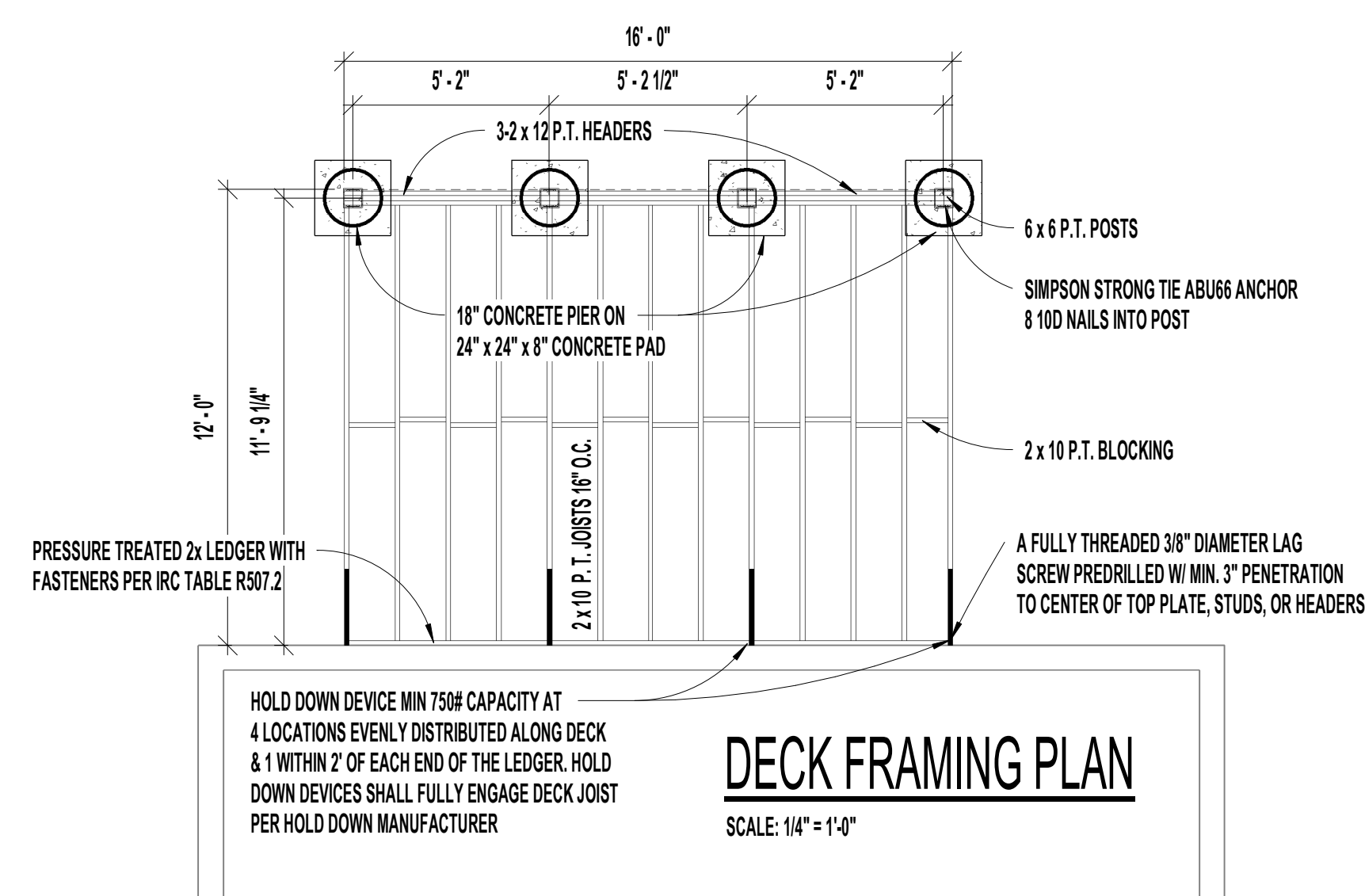
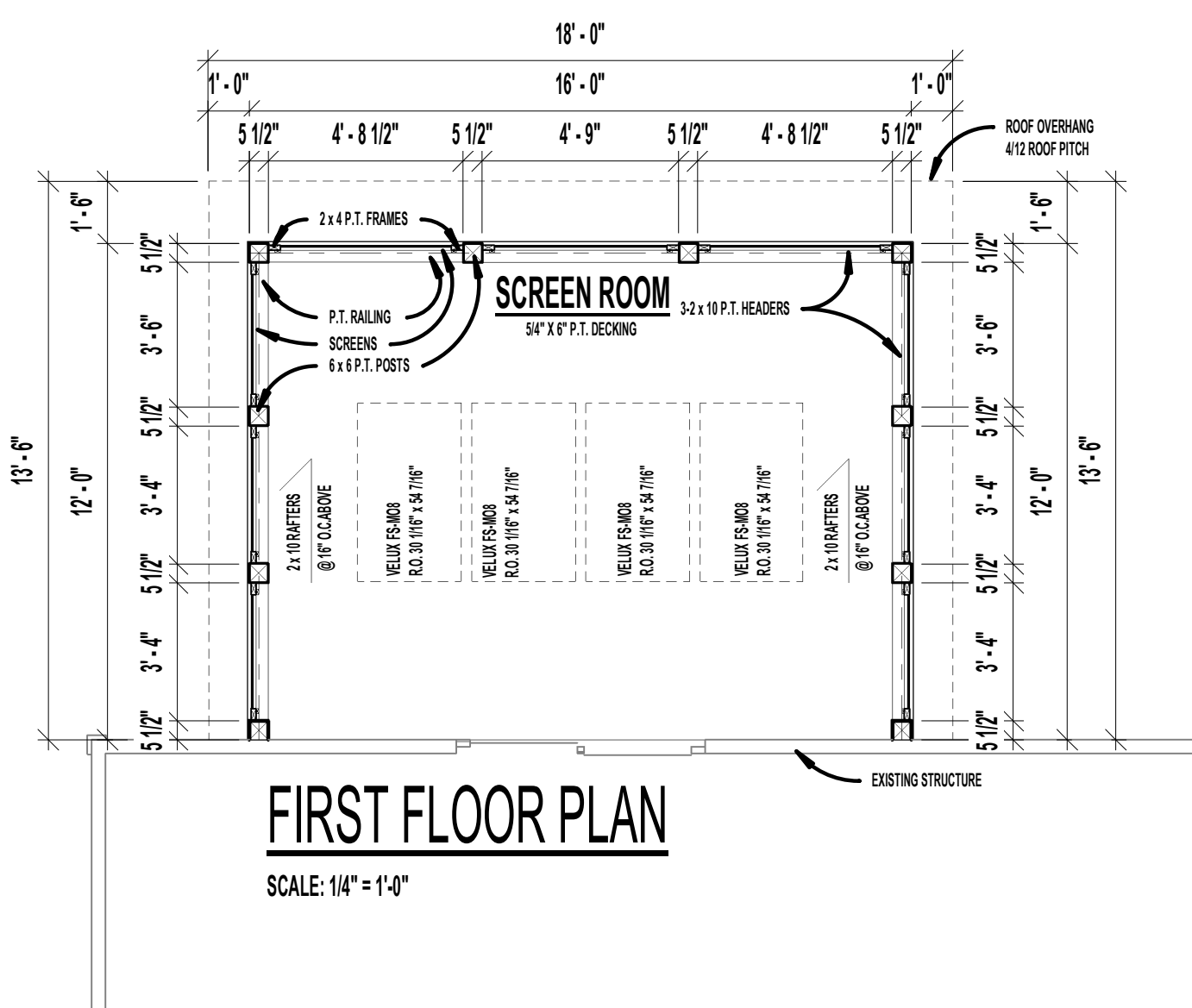
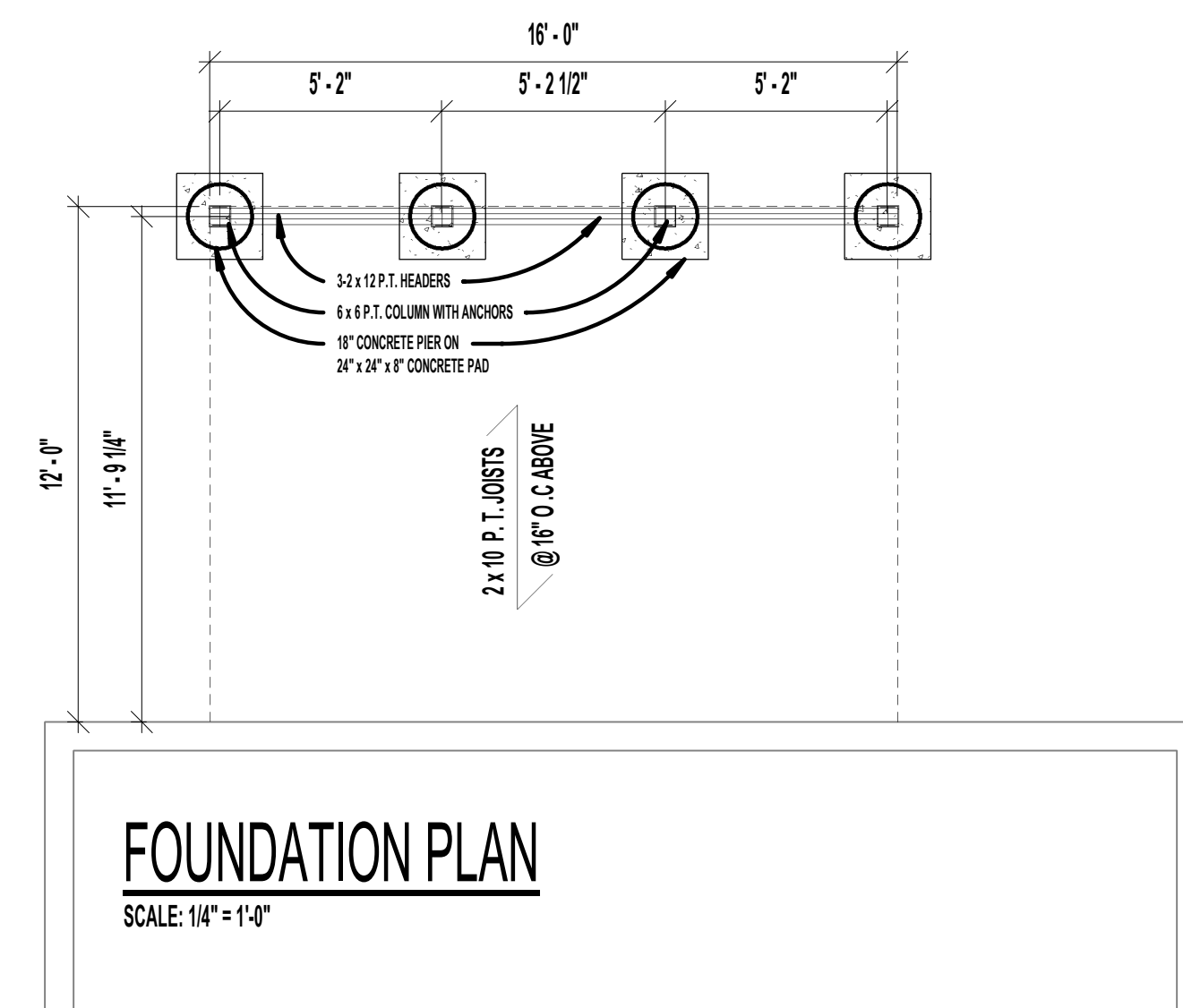
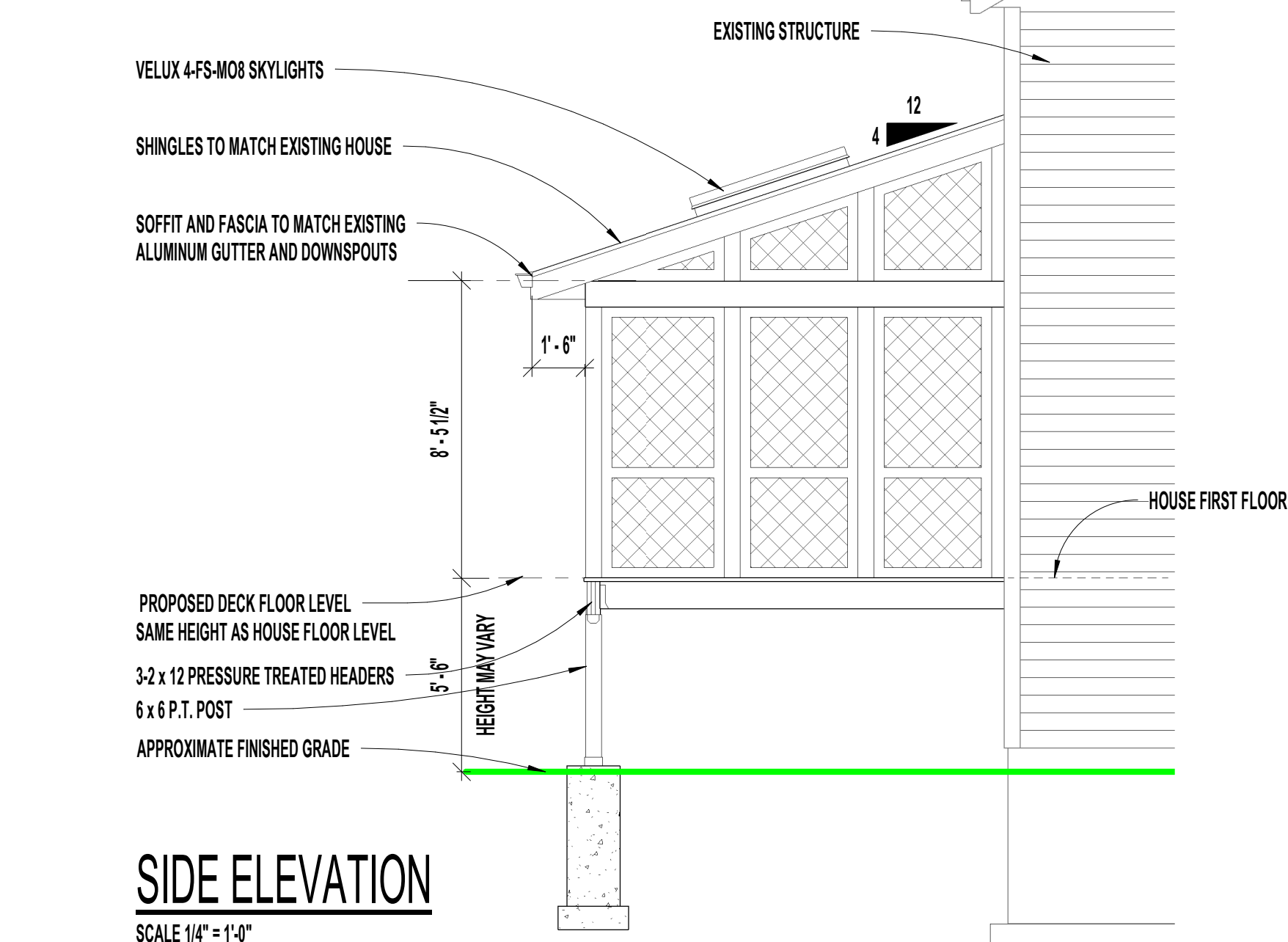
# VELUX®

## The No Leak Skylight™

THIS PLAN INCORPORATES GENERAL PROFESSIONAL AND INDUSTRY STANDARDS. SOME REVISIONS MAY BE REQUIRED TO COMPLY WITH LOCAL BUILDING CODES AND ORDINANCES. THE BUILDER / CONTRACTOR IS SOLELY RESPONSIBLE FOR THE PROPER CONSTRUCTION AND MATERIAL LIST FOR THE BUILDING. THE BUILDER / CONTRACTOR HAS RIGHTS TO ADJUST THE MATERIALS USED PER THERE LOCATION AND MATERIALS USED ON THE EXISTING HOME.

PLANS AND ELEVATIONS:  
A COMPLETE SET CONSISTS OF THE FOLLOWING  
SHEET #1 PLANS, ELEVATIONS, WALL BRACING, AND MATERIAL LISTS.  
SHEET #2 SECTIONS AND DETAILS.  
SHEET #3 SPECIFICATIONS





THIS PLAN INCORPORATES GENERAL PROFESSIONAL AND INDUSTRY STANDARDS. SOME REVISIONS MAY BE REQUIRED TO COMPLY WITH LOCAL BUILDING CODES AND ORDINANCES. THE BUILDER / CONTRACTOR IS SOLELY RESPONSIBLE FOR THE PROPER CONSTRUCTION, AND MATERIAL LIST FOR THE BUILDING. THE BUILDER / CONTRACTOR HAS RIGHTS TO ADJUST THE MATERIALS USED PER THERE LOCATION AND MATERIALS USED ON THE EXISTING HOME.

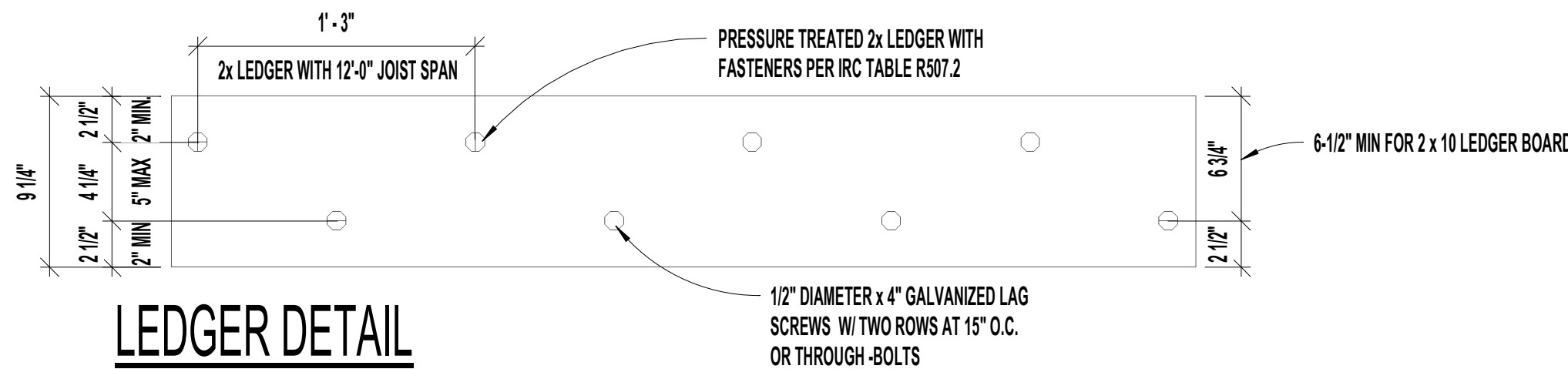
PLANS AND ELEVATIONS:  
A COMPLETE SET CONSISTS OF THE FOLLOWING  
SHEET #1 PLANS, ELEVATIONS, WALL BRACING, AND MATERIAL LISTS.  
SHEET #2 SECTIONS AND DETAILS.  
SHEET #3 SPECIFICATIONS

**VELUX®**  
The No Leak Skylight™

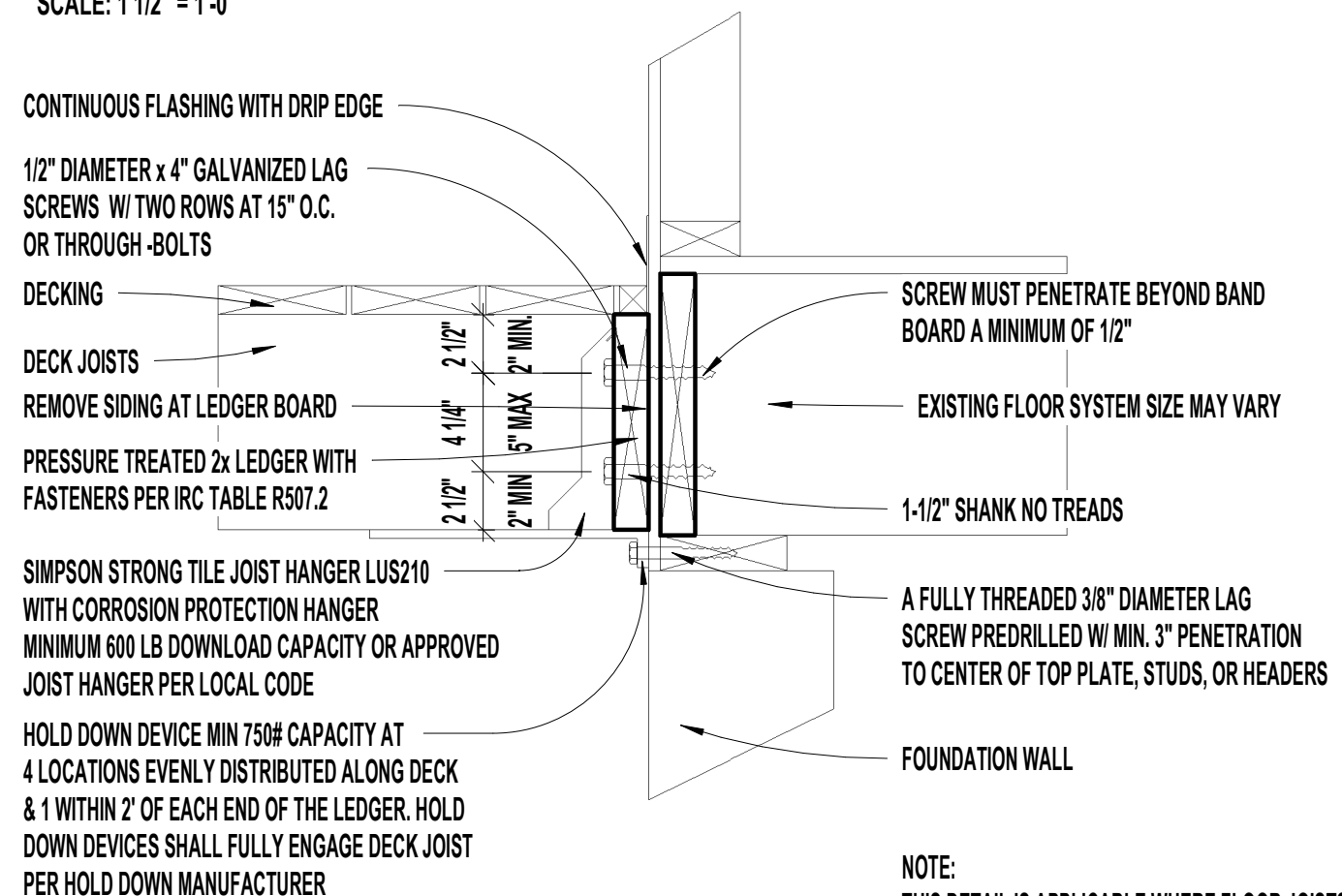
VELUX SCREEN PORCH

SINGLE TIER - 12'-0" x 16'-0"



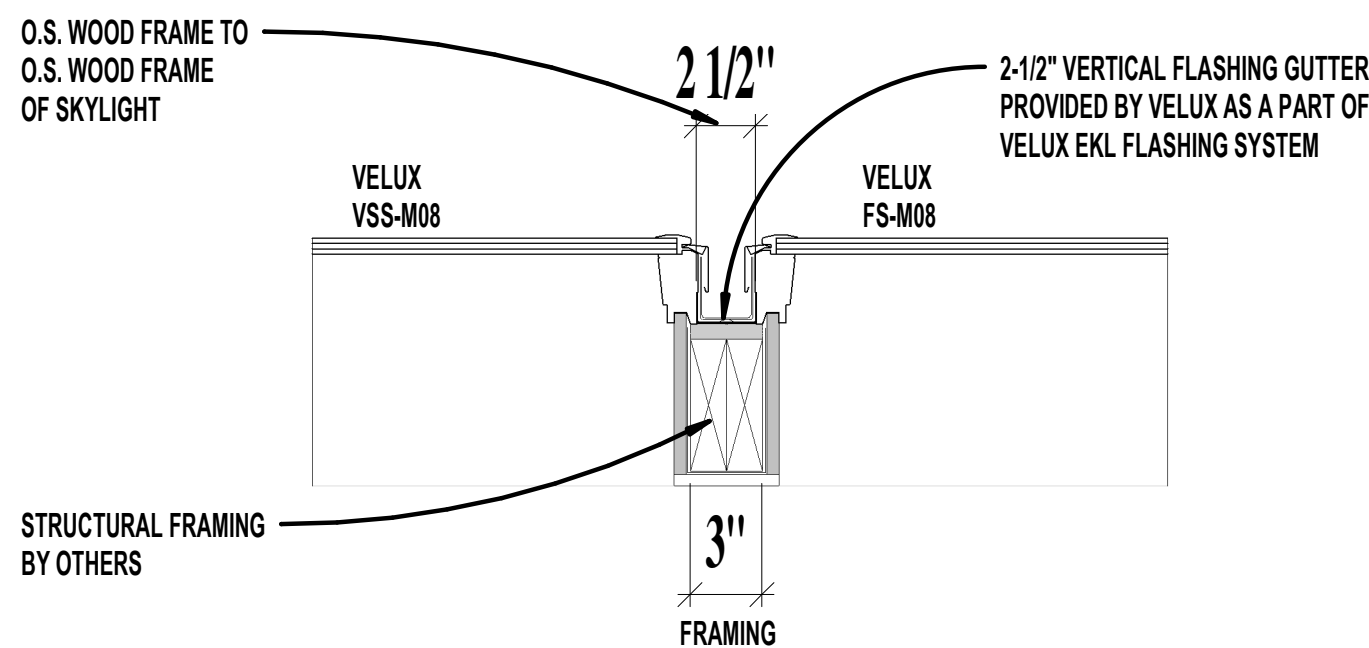


SCALE: 1 1/2" = 1'-0"



## DECK TO HOUSE DETAIL

SCALE: 1 1/2" = 1'-0"



## VERTICAL SKYLIGHT DETAIL SECTION A-A

SCALE: 1 1/2" = 1'-0"

VELUX SKYLIGHT UNIT W/ VELUX FLASHING KIT.  
FOR DETAILED INFORMATION, SEE COMBI-FLASHING  
INSTALLATION INSTRUCTIONS PROVIDED BY VELUX AMERICA LLC

SHINGLES TO MATCH EXISTING HOME.  
ICE AND WATER SHIELD ON ENTIRE ROOF.  
1/2" O.S.B. SHEATHING  
2 x 10 RAFTERS @ 16" O.C.

ALUMINUM GUTTERS AND DOWN SPOUTS  
DRIP EDGE FLASHING  
SOFFIT AND FASCIA MATCH EXISTING  
2 x 8 FASCIA BOARD  
3/8" LP SMART SIDE SOFFIT PLYWOOD  
OR MATCH EXISTING HOUSE  
2 x 4 LOOKOUTS AND LEDGER  
1 x 6 PRESSURE TREATED TRIM BOARD  
CUT TO FIT

3-2 x 10 P.T. HEADERS  
1 x 2 P.T. TRIM BOARD  
2 x 4 P.T. SCREEN FRAME  
SIMPSON STRONG TIE BCS2-3/6 POST TO HEADER CAP  
12-16D NAILS PER HANGER

6 x 6 P.T. COLUMN  
2 x 4 PRESSURE TREATED TOP RAIL  
2 x 4 PRESSURE TREATED VERTICAL RAIL TRIM  
2 x 2 PRESSURE TREATED BALUSTERS

1 x 2 P.T. TRIM BOARD  
2 x 4 P.T. SCREEN FRAME  
2 x 4 P.T. TRIM BOARD  
2 x 4 P.T. SCREEN FRAME  
2 x 4 PRESSURE TREATED VERTICAL RAIL TRIM  
SIMPSON STRONG TIE BCS2-3/6 POST TO HEADER CAP  
12-16D NAILS PER HANGER  
2 x 4 PRESSURE TREATED BOTTOM RAIL  
5/4" x 6" PRESSURE TREATED DECK BOARDS  
2 x 10 P.T. FLOOR JOISTS @ 16" O.C.

3-2 x 12 PRESSURE TREATED HEADER  
SIMPSON STRONG TILE JOIST HANGER LUS210  
WITH CORROSION PROTECTION HANGER  
MINIMUM 600 LB DOWNLOAD CAPACITY  
SIMPSON STRONG TIE BCS2-3/6 POST TO HEADER CAP  
12-16D NAILS PER HANGER

SIMPSON STRONG TIE ABU66 ANCHOR  
8 10D NAILS INTO POST  
18" CONCRETE PIER ON  
24" x 24" x 8" CONCRETE PAD

## BUILDING SECTION

SCALE: 3/4" = 1'-0"

DIMENSIONAL SHINGLES TO MATCH EXISTING HOME.  
ICE AND WATER SHIELD ON ENTIRE ROOF.  
1/2" O.S.B. SHEATHING  
2 x 10 RAFTERS @ 16" O.C.

EXISTING SIDING OVER EXISTING HOUSE WRAP  
LAP OVER COUNTER FLASHING

EXISTING HOUSE WRAP OVER COUNTER FLASHING  
PROVIDE ICE AND WATER SHIELD UP THE WALL 2'-0"  
COUNTER FLASHING  
FLASHING  
2 x 10 LEDGER ANCHORED TO HOUSE STUDS  
RAFTER HANGERS AT EACH RAFTER

VELUX 4FS-M08  
R.O. 54-716"

2-2 x 10 HEADERS FOR SKYLIGHT

8'-110"

CONTINUOUS FLASHING WITH DRIP EDGE  
1/2" DIAMETER x 4" GALVANIZED LAG  
SCREWS W/ TWO ROWS AT 15" O.C.  
OR THROUGH-BOLTS

PRESSURE TREATED 2x LEDGER WITH  
FASTENERS PER IRC TABLE R507.2  
HOLD DOWN DEVICE MIN 750# CAPACITY AT  
4 LOCATIONS EVENLY DISTRIBUTED ALONG DECK  
& 1 WITHIN 2' OF EACH END OF THE LEDGER. HOLD  
DOWN DEVICES SHALL FULLY ENGAGE DECK JOIST  
PER HOLD DOWN MANUFACTURER

SCREW MUST PENETRATE BEYOND BAND  
BOARD A MINIMUM OF 1/2"  
EXISTING FLOOR SYSTEM SIZE MAY VARY

A FULLY THREADED 3/8" DIAMETER LAG  
SCREW PREDRILLED W/ MIN. 3" PENETRATION  
TO CENTER OF TOP PLATE, STUDS, OR HEADERS

LIST OF MATERIALS FOR 12 x 16 VELUX SCREEN ROOM	SIZE	QUANTITY
SKYLIGHTS:		
VELUX SKYLIGHTS	FS-M08	4 EACH
VELUX COMBI-FLASHING	EKL-M00-6001B	1 EACH
	EKL-M00-6002B	2 EACH
	EKL-M00-6003B	1 EACH
	EKL-012-6008-KB	3 EACH

DECK FRAMING:		
PRESSURE TREATED LEDGER BOARD	2 x 12 x 16'-0"	1 EACH
GALVANIZED LAG SCREWS	1/2" DIA. x 4"	28 EACH
CONTINUOUS FLASHING W/ DRIP EDGE	16'-0"	1 EACH
SIMPSON STRONG TIE JOIST HANGER WITH CORROSION PROTECTION	LUS210	13 EACH
SIMPSON STRONG TIE TENSION TIE WITH CORROSION PROTECTION	DTT12	4 EACH
PRESSURE TREATED FLOOR JOISTS	2 x 10 x 12'-0"	13 EACH
PRESSURE TREATED FLOOR JOIST FOR BLOCKING	2 x 10 x 10'-0"	2 EACH
PRESSURE TREATED HEADER	2 x 12 x 16'-0"	3 EACH
SIMPSON STRONG TIE JOIST HANGER WITH CORROSION PROTECTION	LUS210	13 EACH
SIMPSON STRONG TIE POST TO HEADER		
ANCHOR CORROSION PROTECTION	BCS2-3/6	4 EACH
PRESSURE TREATED COLUMNS	6 x 6 x 8'-0"	2 EACH
(NOTE: AMOUNT MAY CHANGE WITH GRADE HEIGHT)		
SIMPSON STRONG TIE POST ANCHOR	ABU66	4 EACH
PRESSURE TREATED DECK BOARDS	5/4" x 6" x 18'-0"	26 EACH

WALL FRAMING:		
PRESSURE POST	6 x 6 x 8'-0"	13 EACH
SIMPSON STRONG TIE POST TO HEADER	BCS2-3/6	26 EACH
ANCHOR CORROSION PROTECTION		
SIMPSON STRONG TIE FACEMOUNT	LUS210-3	2 EACH
HANGER SIDE HEADER TO END HEADER W/ CORROSION PROTECTION	HTP972	6 EACH
SIMPSON STRONG TIE STRAPS		
W/ CORROSION PROTECTION SIDE WALL POST TO RAFTER		
END WALL HEADER	2 x 10 x 16'-0"	3 EACH
SIDE WALL HEADERS	2 x 10 x 12'-0"	6 EACH
PRESSURE TREATED TRIM BOARD	2 x 6 x 12'-0"	4 EACH

SCREEN FRAMING:		
PRESSURE TREATED SCREEN FRAME	2 x 4 x 8'-0"	24 EACH
PRESSURE TREATED SCREEN FRAME	2 x 4 x 10'-0"	16 EACH
PRESSURE TREATED SCREEN FRAME	1 x 2 x 8'-0"	43 EACH
ULTRA VUE INSECT SCREEN	60" x 50'-0"	2 EACH

RAILING:		
PRESSURE TREATED TOP RAIL	2 x 4 x 12'-0"	4 EACH
PRESSURE TREATED BOTTOM RAIL	2 x 4 x 12'-0"	4 EACH
PRESSURE TREATED VERTICAL RAIL	2 x 4 x 10'-0"	8 EACH
PRESSURE TREATED BALUSTERS	2 x 2 x 3'-0"	75 EACH

ROOF FRAMING:		
PRESSURE TREATED RAFTERS	2 x 10 x 16'-0"	16 EACH
PRESSURE TREATED LEDGER BOARD	2 x 10 x 12'-0"	2 EACH
PRESSURE TREATED END RAFTERS	2 x 10 x 16'-0"	2 EACH
PRESSURE TREATED JACK RAFTERS	2 x 10 x 16'-0"	2 EACH
PRESSURE TREATED HEADERS	2 x 10 x 12'-0"	4 EACH
PRESSURE TREATED BLOCKING	2 x 10 x 12'-0"	1 EACH
	2 x 4 x 12'-0"	4 EACH
	2 x 10 x 14'-0"	9 EACH

RAFTER HANGERS	1-1/2" WIDE	18 EACH
ROOFING SHEATHING (1/2" O.S.B. SHEATHING)	1/2" x 4'-0" x 8'-0"	10 SHEETS

EXTERIOR MATERIALS:		
ICE AND WATER SHIELD	36" x 75'-0" ROLL	1 EACH
SHINGLES TO MATCH HOUSE	1 BUNDLE = 100 SQUARE FEET	3 EACH
VENT FLASHING	12'-0"	2 EACH
FASCIA	2 x 8 x 10'-0"	2 EACH
	2 x 8 x 16'-0"	2 EACH
SHINGLE STRIP	1 x 4 x 16'-0"	2 EACH
	1 x 4 x 18'-0"	2 EACH
SOFFIT MATERIAL TO MATCH EXISTING HOME OR BUILDERS CHOICE	3/8" x 4'-0" x 8'-0"	4 EACH
SOFFIT VENT	2 x 10'-0"	2 EACH

INTERIOR MATERIALS:		
PRESSURE TREATED BASEBOARD AT WALL COMMON WITH HOUSE	2 x 4 x 8'-0"	2 EACH

OTHER ITEMS:  
DOOR INTO SCREENROOM FROM HOME MAY NEED TO REPLACE OR A NEW ONE INSTALLED.  
FINISH FLOOR FINISH CAN VARY.  
STEP FROM HOUSE LEVEL TO SCREEN ROOM LEVEL.  
CONCRETE SLAB FOUNDATION AND FOOTING OR ANY FOUNDATION MATERIALS.  
ELECTRICAL LIGHTS, SWITCHES, OUTLETS, LOW VOLTAGE WIRE AND FANS  
HEATING AND AIR CONDITIONING.

VELUX ACCESSORIES:  
VELUX ACTIVE SYSTEM  
SOLAR BLINDS  
COPPER CLADDING AND FLASHING.

THIS PLAN INCORPORATES GENERAL PROFESSIONAL AND INDUSTRY STANDARDS  
SOME REVISIONS MAY BE REQUIRED TO COMPLY WITH LOCAL BUILDING CODES AND  
ORDINANCES. THE BUILDER / CONTRACTOR IS SOLELY RESPONSIBLE FOR THE PROPER  
CONSTRUCTION AND MATERIAL LIST FOR THE BUILDING. THE BUILDER / CONTRACTOR  
HAS RIGHTS TO ADJUST THE MATERIALS USED PER THERE LOCATION AND  
MATERIALS USED ON THE EXISTING HOME.

PLANS AND ELEVATIONS:  
A COMPLETE SET CONSISTS OF THE FOLLOWING  
SHEET #1 PLANS, ELEVATIONS, WALL BRACING, AND MATERIAL LISTS.  
SHEET #2 SECTIONS AND DETAILS.  
SHEET #3 SPECIFICATIONS

## SECTION & DETAILS

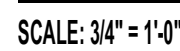
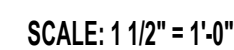
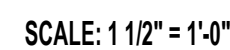
SINGLE TIER - 12'-0" x 16'-0"

VELUX®  
The No Leak Skylight™









SINGLE TIER - 12'-0" x 16'-0"

THIS PLAN INCORPORATES GENERAL PROFESSIONAL AND INDUSTRY STANDARDS. SOME REVISIONS MAY BE REQUIRED TO COMPLY WITH LOCAL BUILDING CODES AND ORDINANCES. THE BUILDER/CONTRACTOR IS SOLELY RESPONSIBLE FOR THE PROPER CONSTRUCTION AND MATERIAL LIST FOR THE BUILDING. THE BUILDER/ CONTRACTOR HAS RIGHTS TO ADJUST THE MATERIALS USED PER THEIR LOCATION AND MATERIALS USED ON THE EXISTING HOME.

PLANS AND ELEVATIONS:  
A COMPLETE SET CONSISTS OF THE FOLLOWING  
SHEET #1 PLANS, ELEVATIONS, WALL BRACING, AND MATERIAL LISTS.  
SHEET #2 SECTIONS AND DETAILS.  
SHEET #3 SPECIFICATIONS