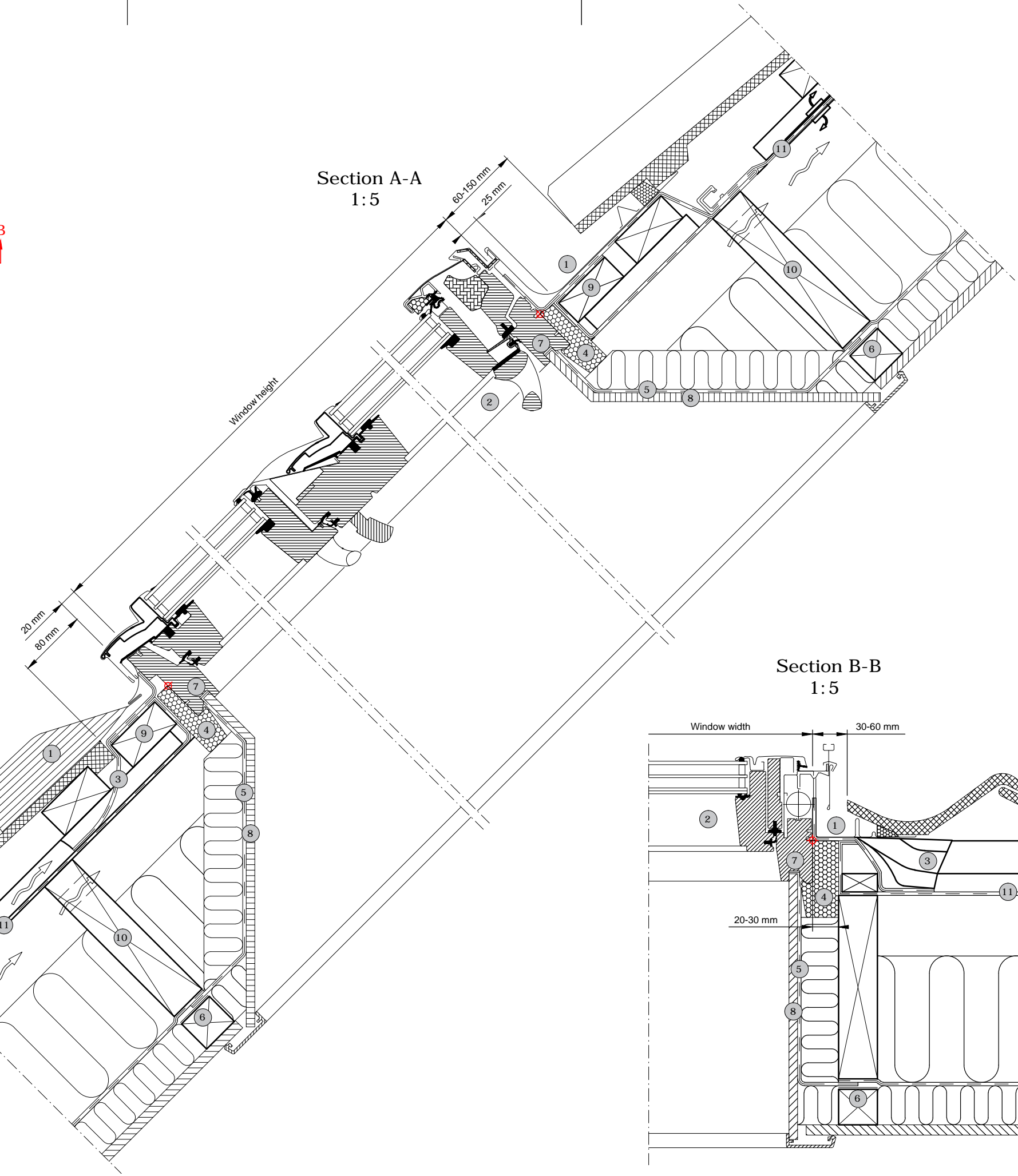
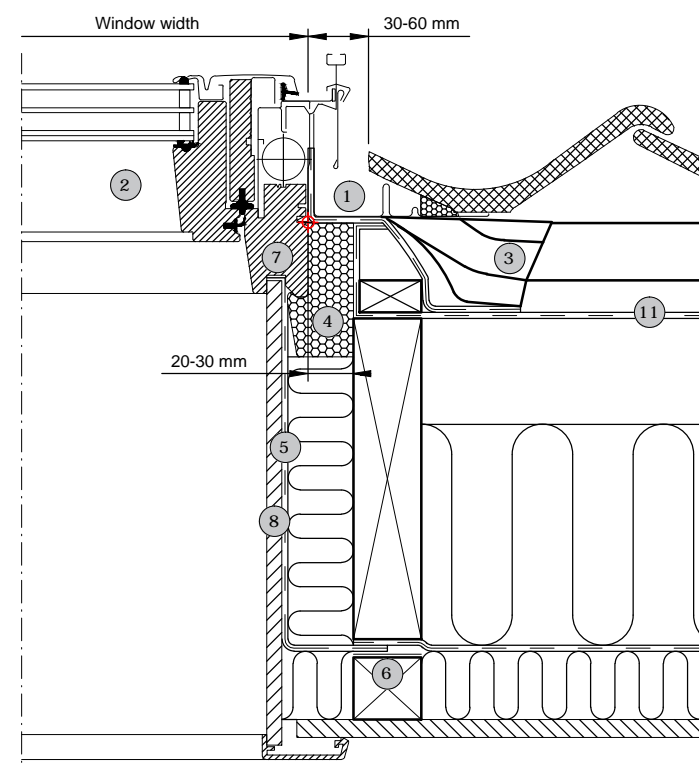


Section A-A
1:5



Section B-B
1:5



- 1 VELUX flashing (EDW and ETW 15°-90°)
- 2 VELUX window (GDL 35°-53°)
- 3 VELUX underfelt collar (BFX and BFX WK34)
- 4 VELUX insulation frame (BDX and BDX WK34)
- 5 VELUX vapour barrier (BBX and BBX WK34)
- 6 VELUX vapour barrier tape (BBX)
- 7 Gasket on BBX in window rebate
- 8 VELUX Lining (LS- and LL-)
- 9 Installation batten (Non VELUX)
- 10 Trimmer where necessary (Non VELUX)
- 11 Felt/breather membrane (Non VELUX)

Roof covering:

Tiles
Max 120 mm

VELUX Products:

GDL
35°-53°

EDW
15°-90°

BFX

BDX

BBX

LS-

ETW
15°-90°

BFX
WK34

BDX
WK34

BBX
WK34

LL-

VELUX window sizes:

Size	Width (mm)	Size	Height (mm)
PK--	942	-K19	2520
SK--	1140		

© VELUX GROUP ® VELUX, VELUX logo are registered trademarks



File name: EDW-GDL-VAS-170-0815-NAS

Drawing no.:DRAWINGNO.: SCo: SCo:

Create date:	Rev. date:	Format:	Scale:
2015	2017-10-04	A3	1:5

Note: When installing VELUX Roof Windows, flashings and installation products, the manufacturers instructions and current building and fire regulations, where applicable, must be met.