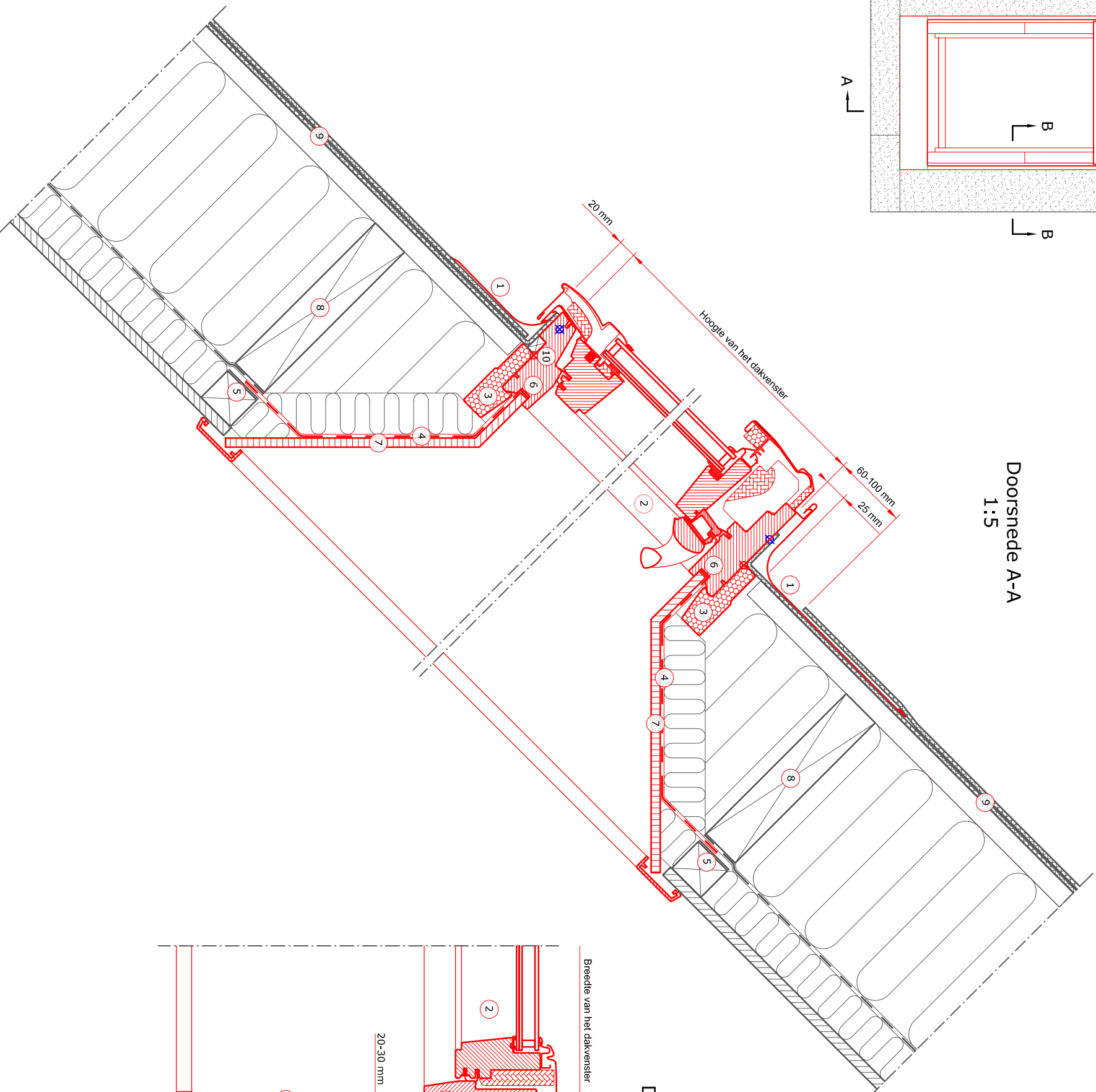
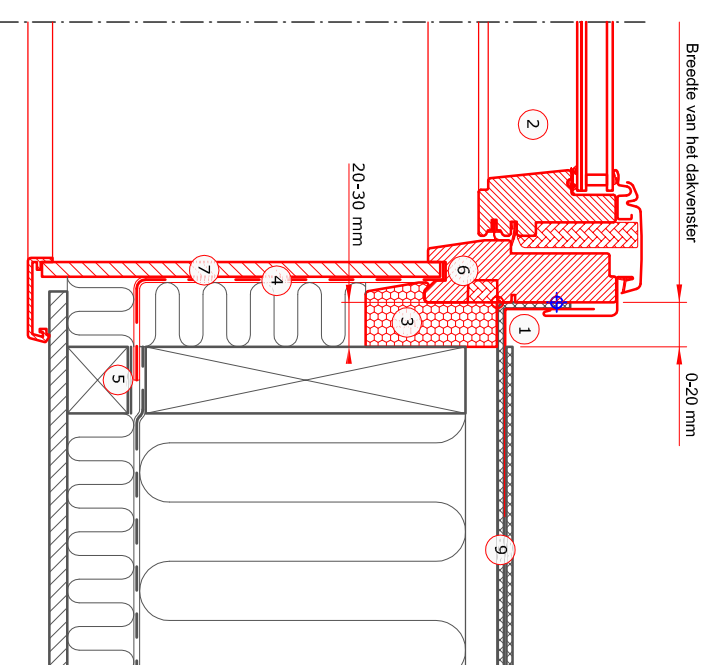


Doorsnede A-A
1:5



Doorsnede B-B
1:5



- 1 VELUX gootstuk (EDL 15°-90°)
- 2 VELUX Dakvenster (GGL 15°-90°)
- 3 VELUX Isolierend kader (BDX)
- 4 VELUX Dampscherm (BBX)
- 5 VELUX Plakband (BBX)
- 6 Dichting in de groef van het dakvenster
- 7 VELUX Binnenafwerking (LS-)
- 8 Hulpkeper als nodig (Niet VELUX)
- 9 Onderdak - 50mm overlap op het vast kader (Niet VELUX)
- 10 Lat multiplex 11x18 mm (Niet VELUX)

Dakbekleding :
Membraan



VELUX Producten :

- GGL 15°-90°
- EDL 15°-90°
- BDX
- BBX
- LS-

Maaten van het VELUX dakvenster:

Maat	Breedte (mm)	Maat	Hoogte (mm)
BK--	472	-K02	778
CK--	550	-K04	978
FK--	660	-K06	1178
MK--	780	-K08	1398
PK--	942	-K10	1600
SK--	1140	-K12	1800
UK--	1340		

© VELUX GROUP VELUX, VELUX logo are registered trademarks



File name: DRAWING 01.13 EDL - NL

Drawing no.: 01.13 VB-0716 SCO: V-B

Create date:	Rev. date:	Format:	Scale:
26.11.2012	07.07.2016	A3	1:5

Note: When installing VELUX Roof Windows, flashings and installation products, the manufacturers' instructions and current building and fire regulations, where applicable, must be met.