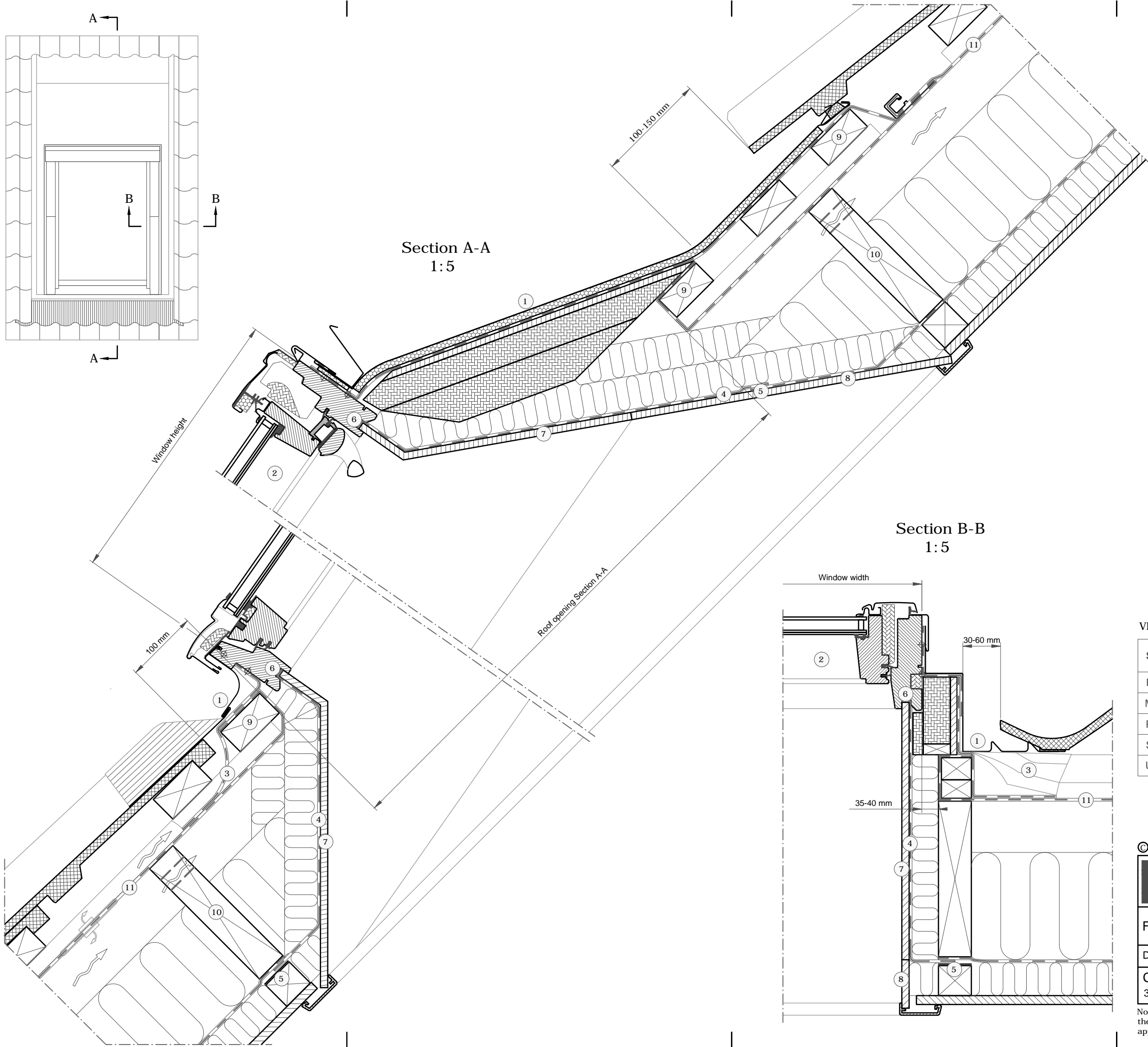
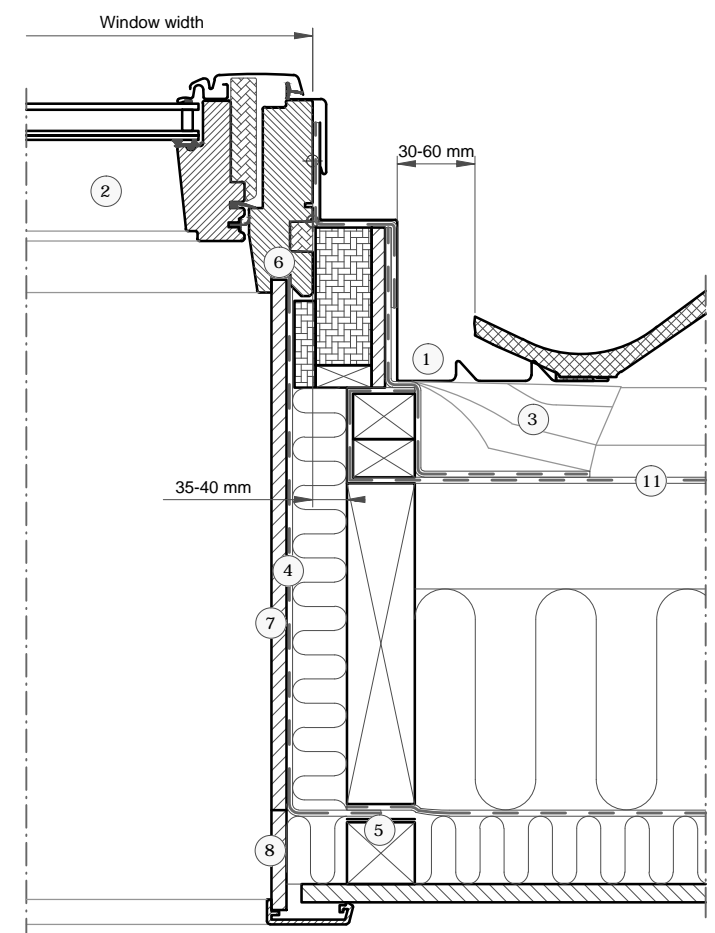


Section A-A
1:5



Section B-B
1:5



- ① VELUX flashing (EAW 10°-75°)
- ② VELUX window (GGL 15°-90°)
- ③ VELUX underfelt collar (BFX)
- ④ VELUX vapour barrier (BBX)
- ⑤ VELUX vapour barrier tape (BBX)
- ⑥ Gasket on BBX in window rebate
- ⑦ VELUX Lining (LS-)
- ⑧ VELUX Lining (LAI)
- ⑨ Installation batten (Non VELUX)
- ⑩ Trimmer where necessary (Non VELUX)
- ⑪ Felt/breather membrane (Non VELUX)

Roof covering:

Tiles
Max 120 mm

VELUX Products:

GGL
15°-90°

EAW
10°-75°

BFX

BBX

LS-

LAI

VELUX window sizes:

Size	Width (mm)
FK--	660
MK--	780
PK--	942
SK--	1140
UK--	1340

Roof opening Section A-A:

Size	Height (mm)	Size	Roof opening (mm)
-K04	978	-K04	1360
-K06	1178	-K06	1630
-K08	1398	-K08	1930
-K10	1600	-K10	2200

© VELUX GROUP ® VELUX, VELUX logo are registered trademarks



File name: EAW-GGL-VAS-141-0616			
Drawing no.:---		SCo: ---	
Create date: 30.05.2016	Rev. date:	Format: A3	Scale: 1:5

Note: When installing VELUX Roof Windows, flashings and installation products, the manufacturers instructions and current building and fire regulations, where applicable, must be met.