

## Product information

# VELUX Flexible Sun tunnel TCF for flat roofs



### Product description

- VELUX sun tunnels are complete installation kits with all necessary components for both exterior and interior connections
- Exterior rooflight module with
  - transparent protective dome
  - PVC frame
  - sash
- Tunnel type
  - TCF - with flexible tunnel
- Interior light diffuser unit with
  - frosted, two-layer light diffuser with EdgeGlow (removable inner pane for easy cleaning)
  - integrated ceiling trim ring
- For information on VELUX sun tunnels
  - TLF/TLR for pitched roofs and flat roofing materials
  - TWF/TWR for pitched roofs and profiled roofing materialssee separate Product information sheets

### Roof pitch

- Can be installed in roof pitches between 0° and 15°

### Materials

- Polycarbonate, dome
- PVC, frame
- Plastic, sash
- Fibreglass yarn or aluminium with reflective coating, tunnels
- Polyethylene (PE) foil, vapour barrier collar
- Polycarbonate, interior light diffuser
- Plastic, integrated ceiling ring

### Downloads

For installation instructions and CAD drawings, please visit [www.velux.co.uk](http://www.velux.co.uk)

## Certifications

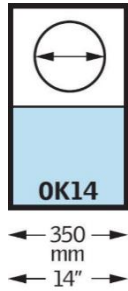


The VELUX product factories guarantee quality systems implementation process and environmental management systems through appropriate accreditations ISO 9001 and ISO 14001

**EUTR** In compliance with the EU Timber Regulation (EUTR), EU regulation 995/2010

**REACH** We are aware of the REACH regulation and acknowledge the obligations. No products are obliged to be registered in accordance to REACH and none of our products contain any Substances of Very High Concern.

Available sizes



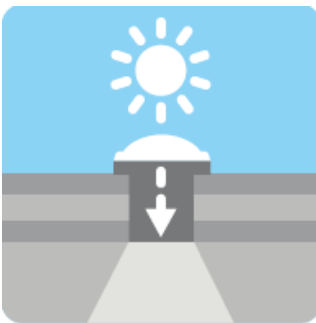
VELUX sun tunnel TCF is available in size OK14 only  
 Measurements are tunnel diameters.

About VELUX sun tunnels

VELUX sun tunnels **direct the natural light** captured from the sky, through the loft space and into rooms and corridors where installation of traditional VELUX roof windows is either not possible or not appropriate.

VELUX sun tunnels can **transform even the darkest places** that would normally have to do with artificial lighting **into bright and welcoming living areas**.

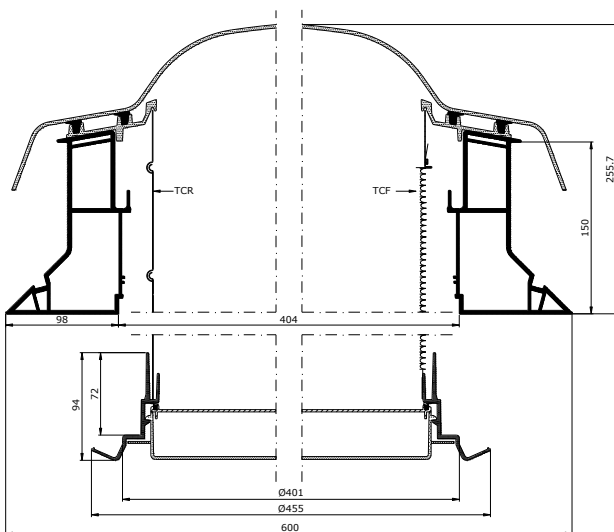
The reflective tunnel, flexible or rigid, leads the natural daylight from the rooflight module into the building. The design of the tunnel ensures an **exceptional reflection of the incoming daylight**.



The **flexible** tunnel is ideal for distances between roof and ceiling from 0.2 to 0.9 m.

- flexible fibreglass
- high reflective coating
- tunnel diameter 350 mm

Section

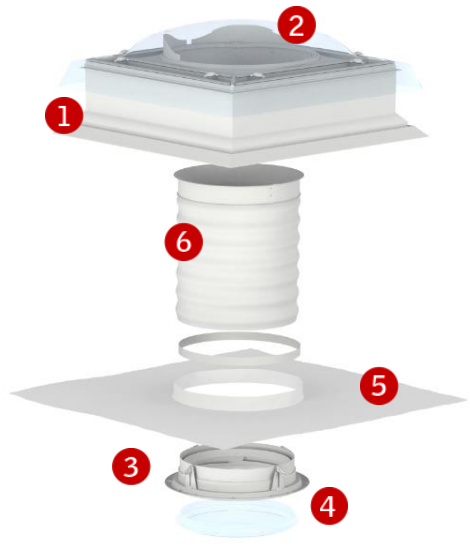


**Variants and sizes**

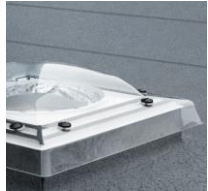
|   | <b>TCF</b>   |
|---|--|
| <b>Sizes</b>  | 0K14   |
| <b>Roof pitch</b>                                     | 0°-15°   |
| <b>Roofing material</b>                               | Roofing felt materials   |
| <b>Exterior rooflight module</b>                      | <ul style="list-style-type: none"> <li>• PVC frame, white</li> <li>• plastic sash</li> </ul> protective dome, acrylic or polycarbonate |
| <b>Tube</b>   | <ul style="list-style-type: none"> <li>• <b>Flexible</b> tube</li> <li>• fibreglass</li> </ul> high reflective coating                 |
| <b>Standard tunnel length</b>                         | 0.9 m  |
| <b>Length including tunnel extension sections ZTR</b> | -  |
| <b>Interior light diffuser unit</b>                   | <ul style="list-style-type: none"> <li>• frosted, two-layer polycarbonate light diffuser</li> </ul> integrated ceiling ring, white     |

Visible features

TCF



**1 Rooflight module**  
The square rooflight module is installed in the roof and flashed with the same roofing felt material as the rest of the roof.



**2 Protective dome**  
The protective dome is made of polycarbonate. It is fixed to the frame with special bolts.



**3 Ceiling ring**  
Seen from the inside, the sun tunnel ends in a frosted light diffuser discretely framed by a white ceiling ring.



**4 Light diffuser with EdgeGlow**  
The discreet light diffuser is designed with EdgeGlow, a new ring of clear glass around the edge of the light diffuser that spreads the light better in the room and offers unique light effects.



**5 Vapour barrier collar**  
Vapour barrier collar BBX is supplied with the sun tunnel to ensure a tight connection between the sun tunnel and the existing vapour barrier of the house.



**6 Flexible tunnel**  
A high reflective coating along the interior of the flexible tunnel provides an excellent reflection rate.

## Accessories



### Light kit ZTL

Light kit ZTL turns the sun tunnel into a lamp when it is dark outside. Low energy LED technology provides dependable light for many years and slim line design minimises shadows on the diffuser pane.

#### Light kit ZTL

- can easily be fitted in both new and already installed sun tunnels
- is supplied with a 4W LED light bulb (corresponds to a 40W incandescent bulb)



### Low U-value kit ZTB

Low U-value kit ZTB 0K14 2002 lowers the U-value in a standard installation. When fitted, there is no visible difference between a sun tunnel with or without the low U-value kit. The same, discrete interior design is maintained.

#### Low U-value kit ZTB

- is very easily fitted - together with or after installation of the sun tunnel
- consists of two layers of acrylic glass and a gasket



## Note

We reserve the right to make technical changes.

For more information on sun tunnels TCF and other VELUX products, please visit [www.velux.co.uk](http://www.velux.co.uk)