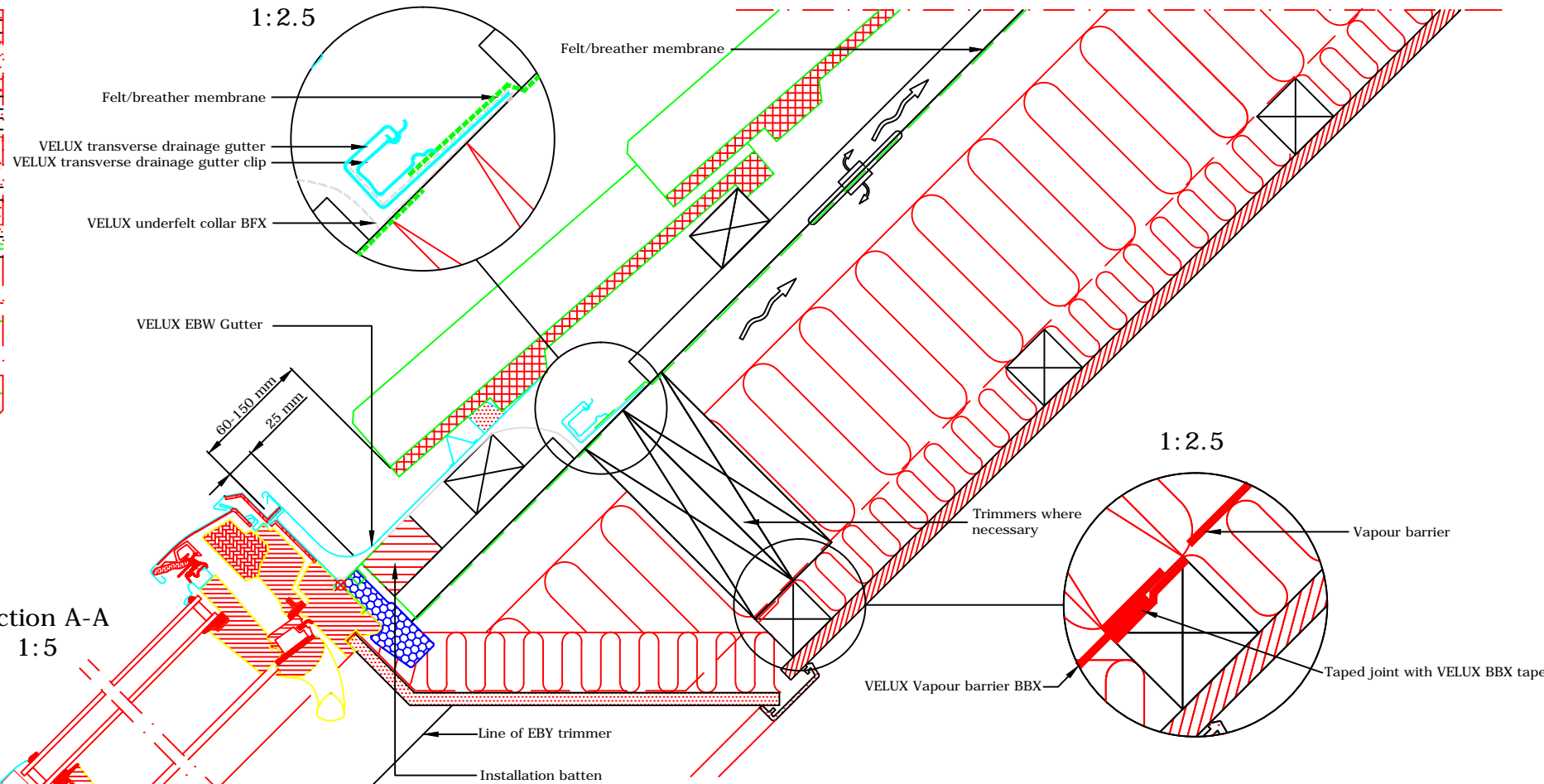
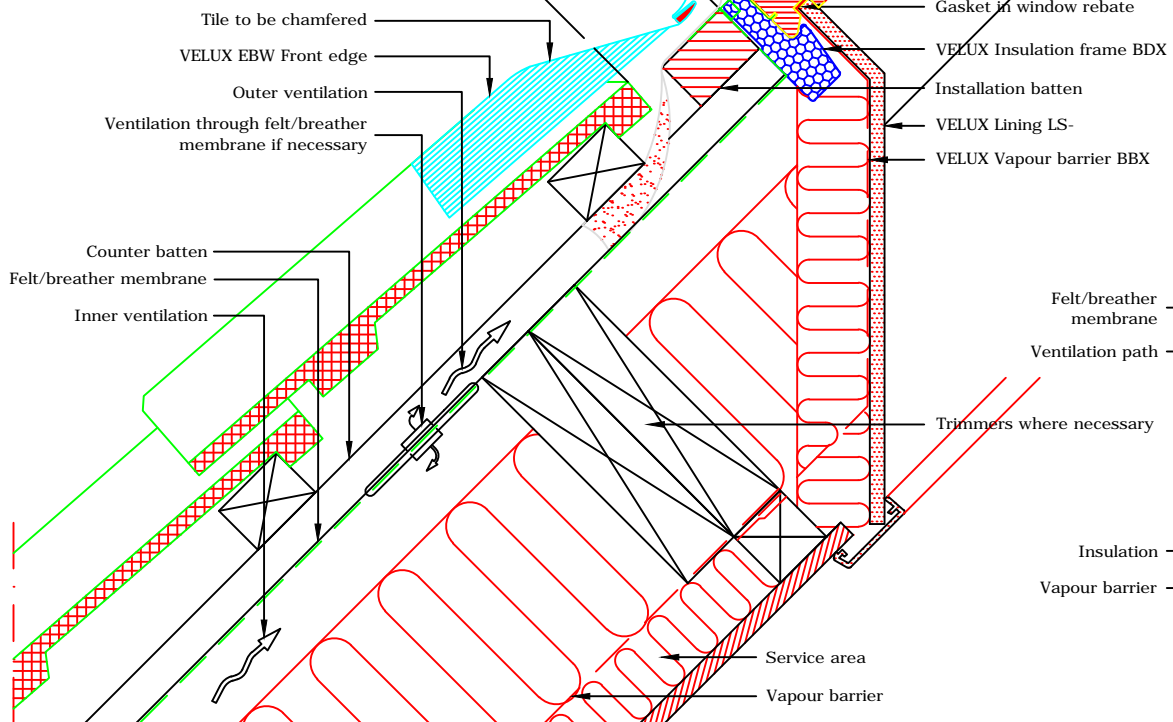




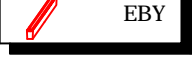





TYPICAL ELEVATION



Section A-A  
1:5



Section B-B  
1:5

- VELUX Products:
-  GPL  
15°-55°  
\* 55°-75° with special springs
  -  EBW  
15°-90°
  -  EBY
  -  BFX
  -  BDX
  -  BBX
  -  LS-
- Roof covering:
-  TILES  
< 120 mm



VELUX Company Ltd  
Woodside Way  
Glenrothes, Fife KY7 4ND  
tel: +44 (0) 1592 778 225

**VELUX top-hung roof window**  
**GPL twin installation into profiled tile**  
EBW flashing kit - standard install - 18mm frame gap  
*All dimensions are in millimetres where shown*

NOTE! When installing VELUX roof windows, flashings and accessories, please ensure compliance with building regulations and British/European standards where necessary. This detail represents the principles of a typical installation only and the design and specification of the final detail is the responsibility of others.

Latest revision:  
*Note re: restrictions on use of EBY trimmer added*

Date:	January 2014
Rev no:	A
Rev date:	Nov 2014
Drawn:	PJH

File name:	GPL-EBW-0114-1032
Scale:	1:5 approx. @ A3