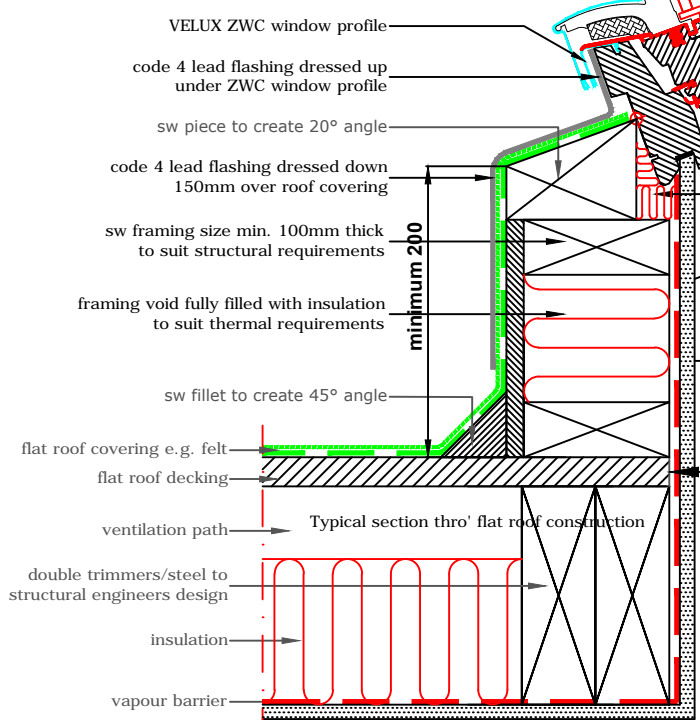
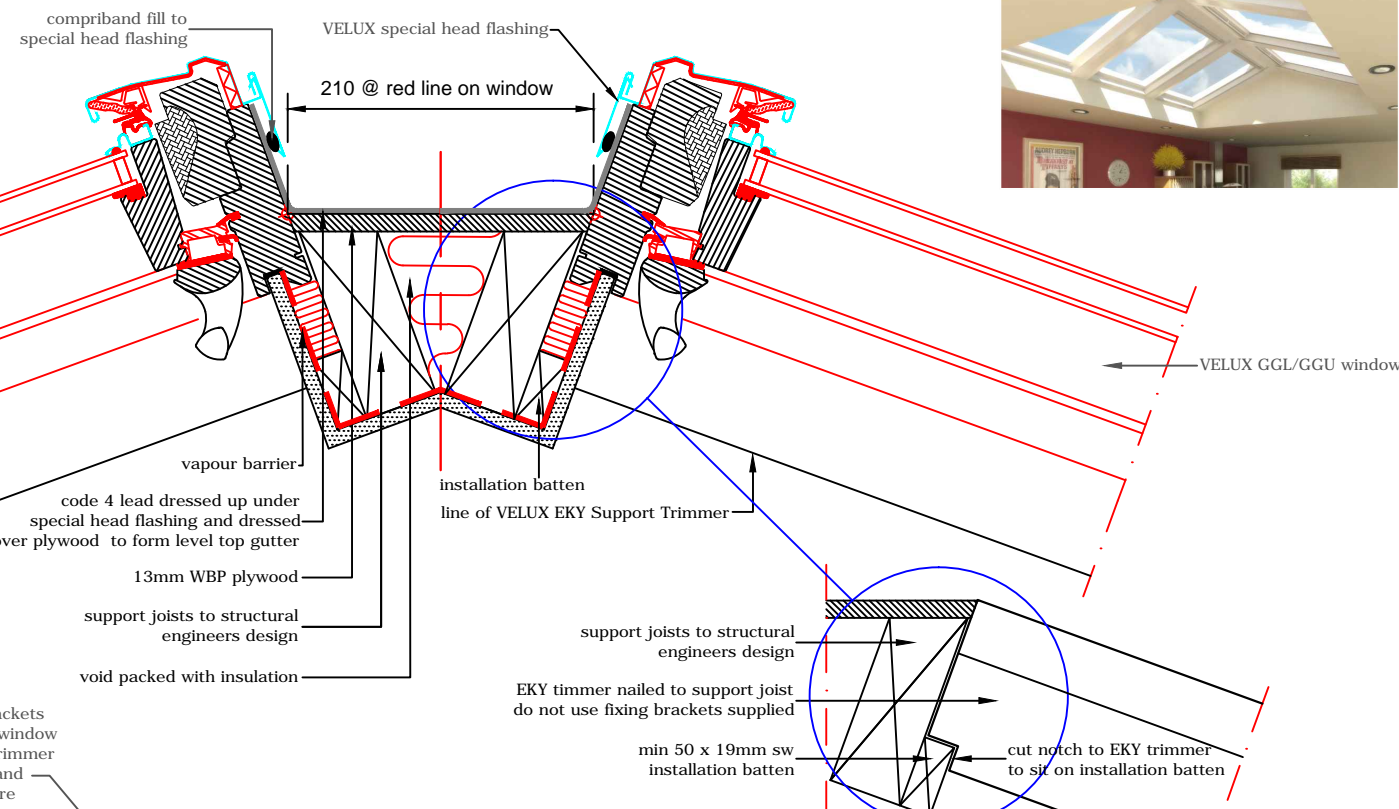


**STRUCTURAL OPENING LENGTH DIMENSIONS @ 20°**

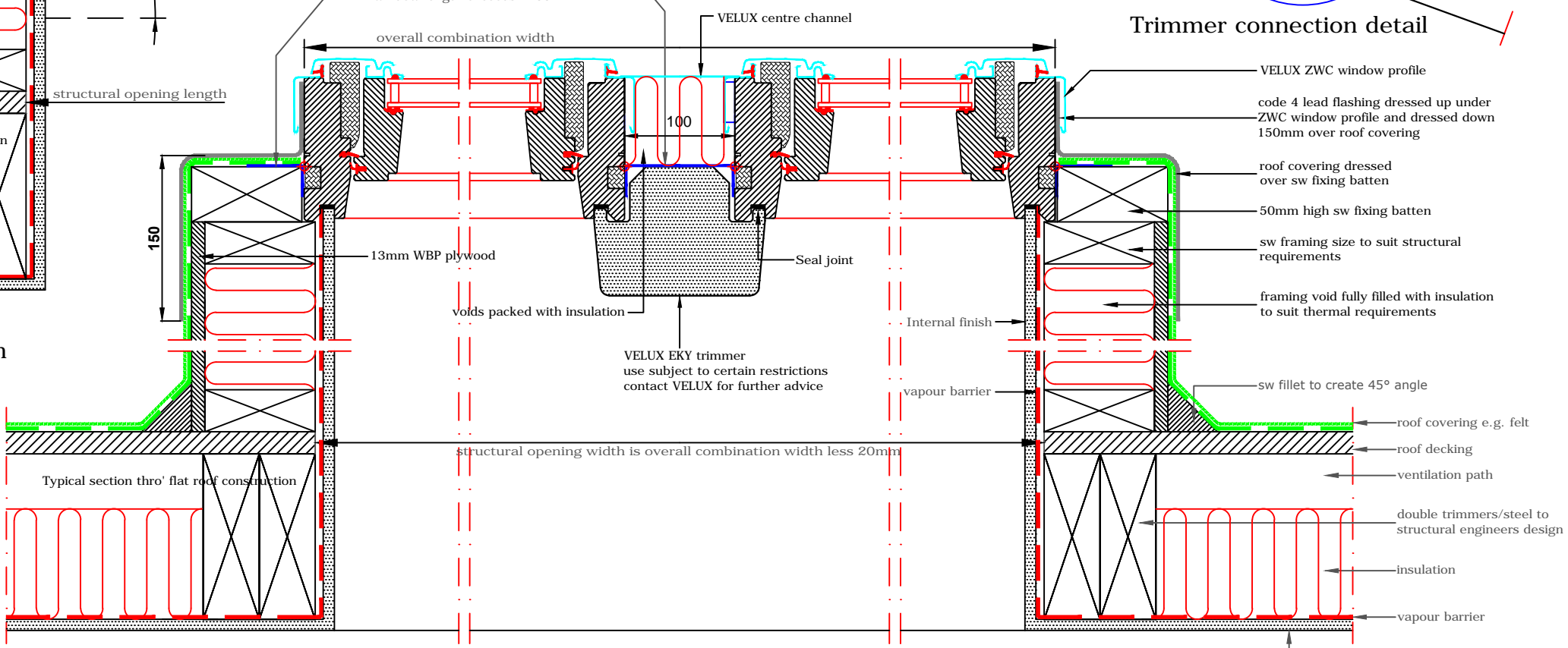
Window ref (e.g. MK04)	Window length (mm)	Opening size (mm)
-K02	780	1630
-K04	980	2005
-K06	1180	2385
-K08	1400	2795
-K10	1600	3170
-K12	1800	3550

see section B-B below for structural opening width

**Typical roof plan**

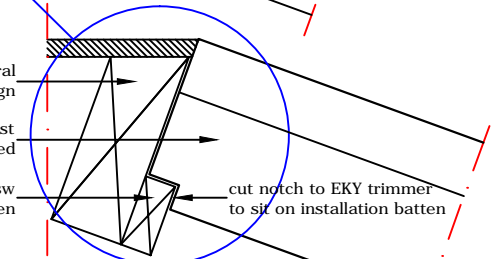


**Section A-A**  
Typical section thro' pitch



**Section B-B**  
Typical section thro' combination

**Trimmer connection detail**



**VELUX components supplied:**

- GGL/GGU windows - manual/electric
- ZWC window profile kits
- EKY trimmers
- special head flashings
- centre channels

**NOTE!**

This drawing is for guidance only and both the designer and installer must satisfy themselves that the principles outlined in this drawing are effectively transposed to suit unique site conditions and limitations

**NOTE:**  
3mm L-shaped galvanised steel brackets by others to be fixed at red line to window on 50mm deep sw battens & EKY trimmer - fixed to sides of window at head and base and at centres of window where window length exceeds 1400mm

structural opening width is overall combination width less 20mm



VELUX Company Ltd  
Woodside Way  
Glenrothes, Fife KY7 4ND  
tel: +44 (0) 1592 778 225

**VELUX centre-pivot roof window**  
**GGL custom combi installation into atrium**  
Custom built atrium framework - installed with 100mm frame gap  
*All dimensions are in millimetres where shown*

**NOTE!** When installing VELUX roof windows, flashings and accessories, please ensure compliance with building regulations and British/European standards where necessary. This detail represents the principles of a typical installation only and the design and specification of the final detail is the responsibility of others.

Latest revision:  
*Note re: restrictions on use of EKY trimmer added*

Date:	<b>February 2014</b>
Rev no:	B
Rev date:	Nov 2014
Drawn:	<b>PJH</b>

File name:  
**GGL-SHF-0214-1211**

Scale: **1:5 approx. @ A3**