

GRILLODUR®

facades

VELUX®

Commercial



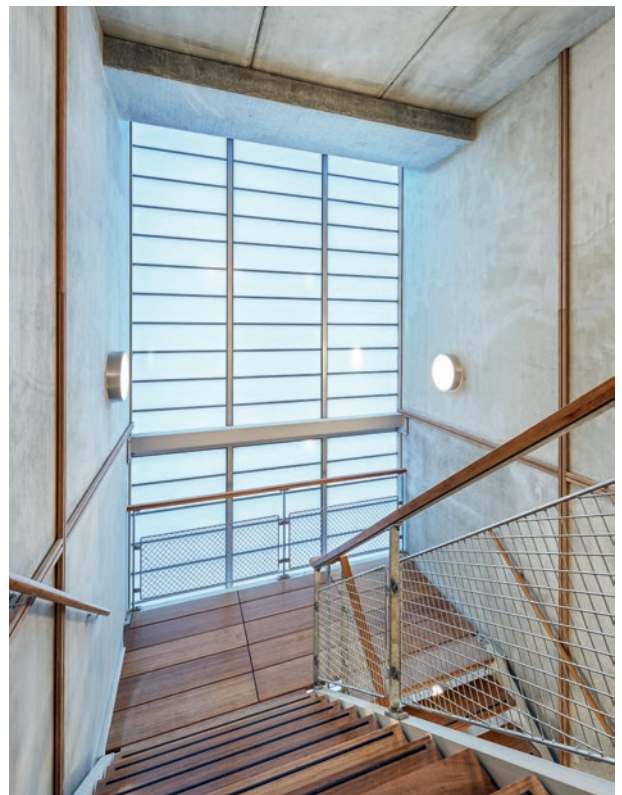
GRILLODUR® facades – fibre glass walls, that create space

GRILLODUR® facades

- optimal room illumination
- glare- and shadow-free daylight
- element lengths up to 4,000 mm (standard), up to 6,000 mm (on request)
- U-value glazing up to 0.8 W/m²K
- total energy transmission up to 21%
- ball-impact safety tested in accordance with DIN 18032-3 (including hockey balls)
- highest chemical resistance
- sound insulation: R_w up to 36 dB
- flexible design thanks to different standard colours

The GRILLODUR® facade is an ideal alternative to constructions with glass. The facade daylight system is used in all situations where large and light weight illuminated areas are required for the structure, to realize a room illumination with glare-free daylight.

The various superstructural parts allow the planner an aesthetic freedom for integration of the facade daylight system in the structure. Window and door profiles in all ways of delivery, that are adapted for the system measurements of the basic construction, belong to the product range.

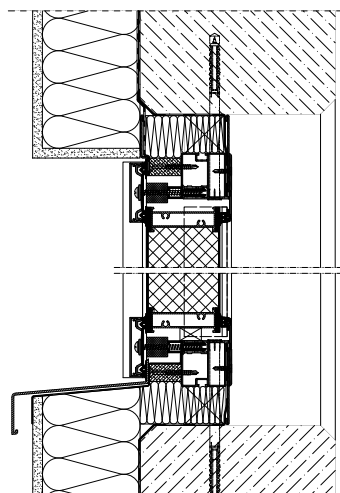
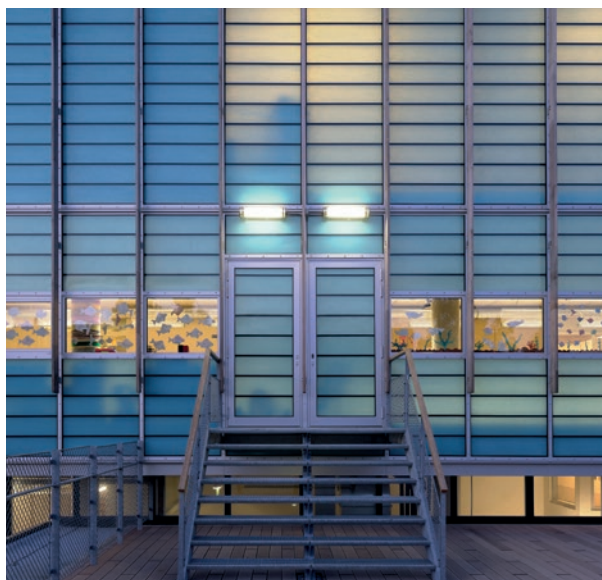


Technical data GRILLODUR® facade daylight systems

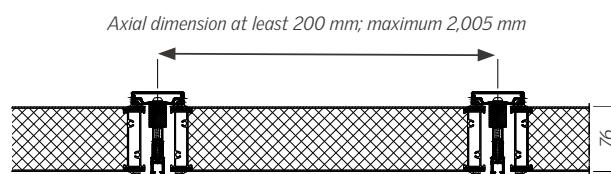
Width of element	up to 2,000 mm
Thickness of element	≥ 70 mm
Height of element	up to 4,000 mm (standard), up to 6,000 mm (on request)
Profile design	closed or open profiles

Basis: building height up to 10 m wind load 0,5kN/m²

The separate elements are prefabricated with aluminium profiles in a distance of 300 mm to a maximum element width of 2,000 mm. By the use of a two-part t-connector the separate elements are connected to a holistic facade. Depending on the static requirements aluminium/steel rectangular tubes are integrated inside or outside to realize a bracing force-fit. The results are profile visible widths of 60 mm.



Detail GRILLODUR® facade



Detail GRILLODUR® paneel