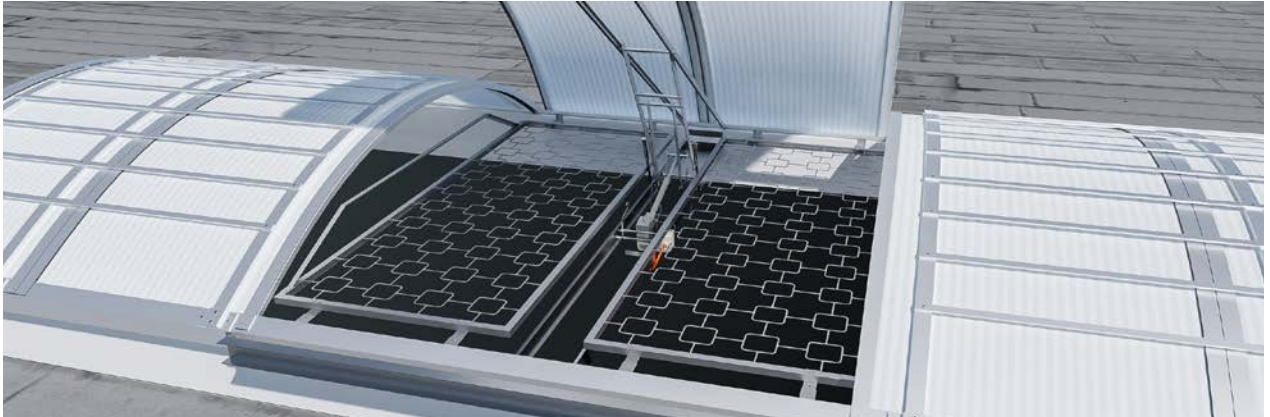


VARIO-SAFEGUARD and LB-DDS

VELUX®
Commercial


Comprehensive traffic route and flap protection for the retrofitting of continuous rooflights

VARIO-SAFEGUARD and LB-DDS

Traffic route and flap protection VARIO-SAFEGUARD

- retrofittable traffic route and flap protection of continuous rooflights through the eave-side use of 5 aluminium straps with a distance of 150mm
- attachment to the eave construction as a secondary system; meaning without any influence on sealing/drainage
- Ideal for safety related refurbishments of continuous rooflights (VARIO-NORM, VARIO-THERM)
- "fall-through protection" (in eaves area) tested in accordance with GS-BAU-18:2015-02
- complete effectiveness in combination with the flap protection system LB-DDS
- overall protection at the sides with ventilation and SHEV flaps
- optional powder coating if desired (standard RAL)

Product advantages of the securing concept

VARIO-SAFEGUARD/LB-DDS

- permanent, fully effective protection in eaves and SHEV flap area to implement applicable norms and regulations (DIN 4426:2017-01, ASR A 2.1, DGUV Regulation 38 and DGUV Regulation 101-016)
- economic retrofitting of continuous rooflights possible without removing the glazing (as, for example, there is no interruption to operation)
- low influence on daylight level

Requirements:

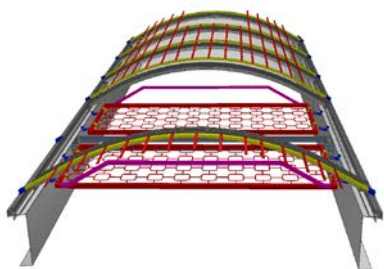
- installation only by trained technicians
- annual testing/visual checks and documentation of protective effect are recommended

Dynamic fall-through protection system

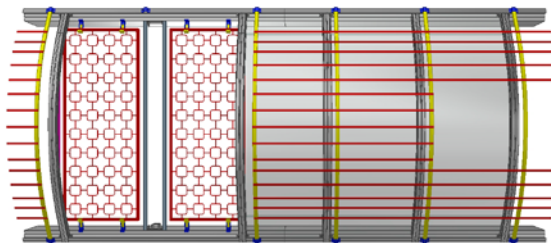
LB-DDS for continuous rooflight flaps

- retrofittable "fall-through protection" for continuous rooflight flaps to protect against falling accidents (e.g. during maintenance work on the SHEV device)
- "fall-through protection" tested in accordance with GS-BAU-18:2015-02 and DGUV test certificate
- special design ensures absorption of drop energy

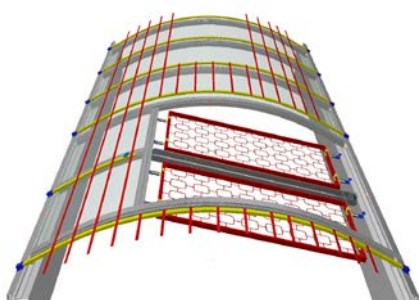
VARIO-SAFEGUARD with lateral protection beside the flaps and additional flap securing with LB-DDS



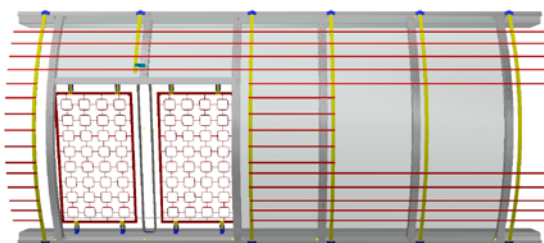
Continuous rooflight with SHEV full flap permanently and fully effective protection ensured by VARIO-SAFEGUARD and LB-DDS



Plan view



Continuous rooflight with SHEV lateral flap permanently and fully effective protection ensured by VARIO-SAFEGUARD and LB-DDS



Plan view