

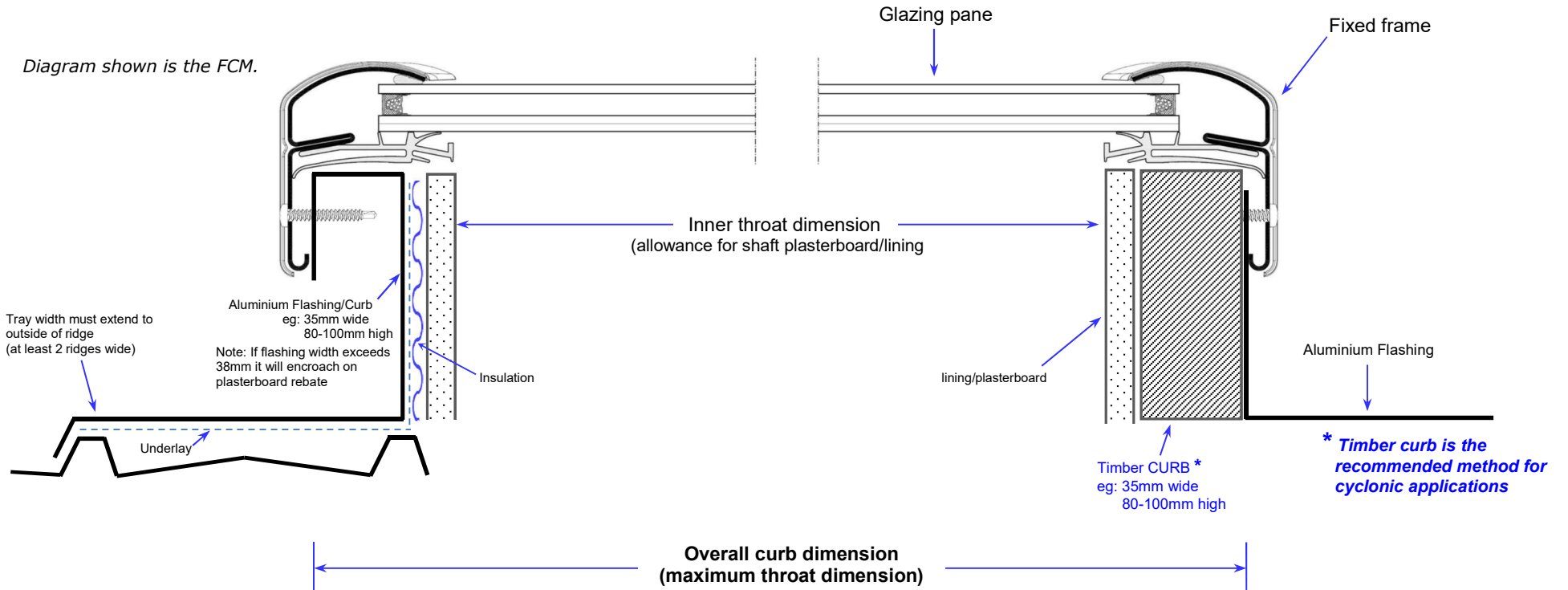
FLAT ROOF SKYLIGHTS – FCM/VCM/VCS (“Curb Mounted” Skylights)

Curb detail – suggestion only. (flashing is not supplied with the flat roof skylights)

The diagram describes a suggested method of fixing the FCM/VCM/VCS on a curb flashing. As such it is intended to be used **as a guide only**. Any roof flashing and/or waterproofing is to be supplied by the installer/roofer and must be suitable for the type of roofing material.

The installation of the flashing onto the roof remains the responsibility of the installer.

This diagram does not apply to any internal and/or external guarantees issued.



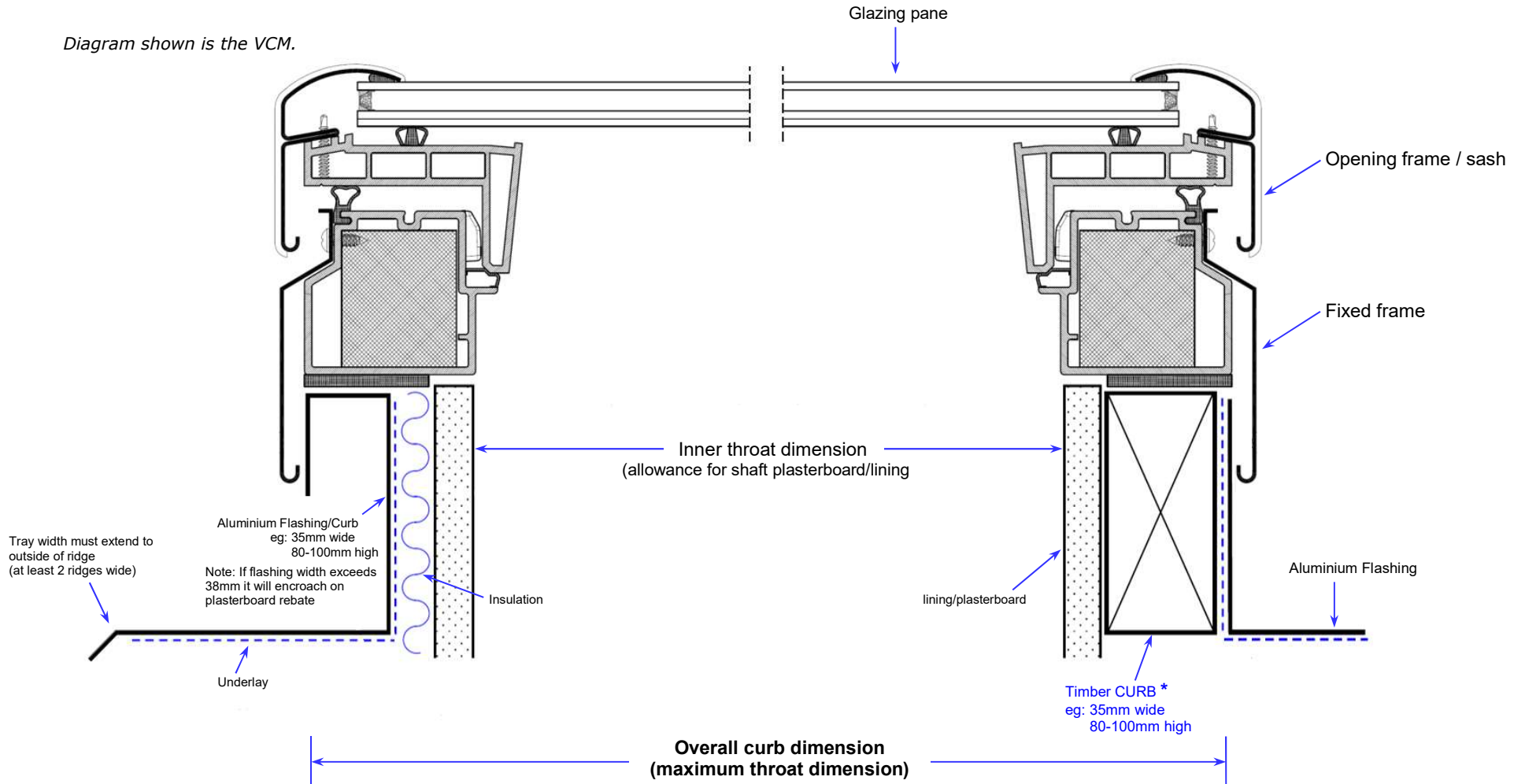
Inner throat dimension:

1430	=	368 mm x 775 mm
2222	=	572 mm x 572 mm
2230	=	572 mm x 775 mm
2234	=	572 mm x 877 mm
2246	=	572 mm x 1181 mm
2270	=	572 mm x 1792 mm
3030	=	775 mm x 775 mm
3046	=	775 mm x 1181 mm
3434	=	876 mm x 876 mm
4646	=	1181 mm x 1181 mm

OVERALL CURB DIMENSION:

1430	=	460 mm x 870 mm
2222	=	665 mm x 665 mm
2230	=	665 mm x 870 mm
2234	=	665 mm x 970 mm
2246	=	665 mm x 1275 mm
2270	=	665 mm x 1885 mm
3030	=	870 mm x 870 mm
3046	=	870 mm x 1275 mm
3434	=	970 mm x 970 mm
4646	=	1275 mm x 1275 mm

Diagram shown is the VCM.



Inner throat dimension:

1430 =	368 mm x	775 mm
2222 =	572 mm x	572 mm
2230 =	572 mm x	775 mm
2234 =	572 mm x	877 mm
2246 =	572 mm x	1181 mm
2270 =	572 mm x	1792 mm
3030 =	775 mm x	775 mm
3046 =	775 mm x	1181 mm
3434 =	876 mm x	876 mm
4646 =	1181 mm x	1181 mm

OVERALL CURB DIMENSION:

1430 =	460 mm x	870 mm
2222 =	665 mm x	665 mm
2230 =	665 mm x	870 mm
2234 =	665 mm x	970 mm
2246 =	665 mm x	1275 mm
2270 =	665 mm x	1885 mm
3030 =	870 mm x	870 mm
3046 =	870 mm x	1275 mm
3434 =	970 mm x	970 mm
4646 =	1275 mm x	1275 mm

Insulation.

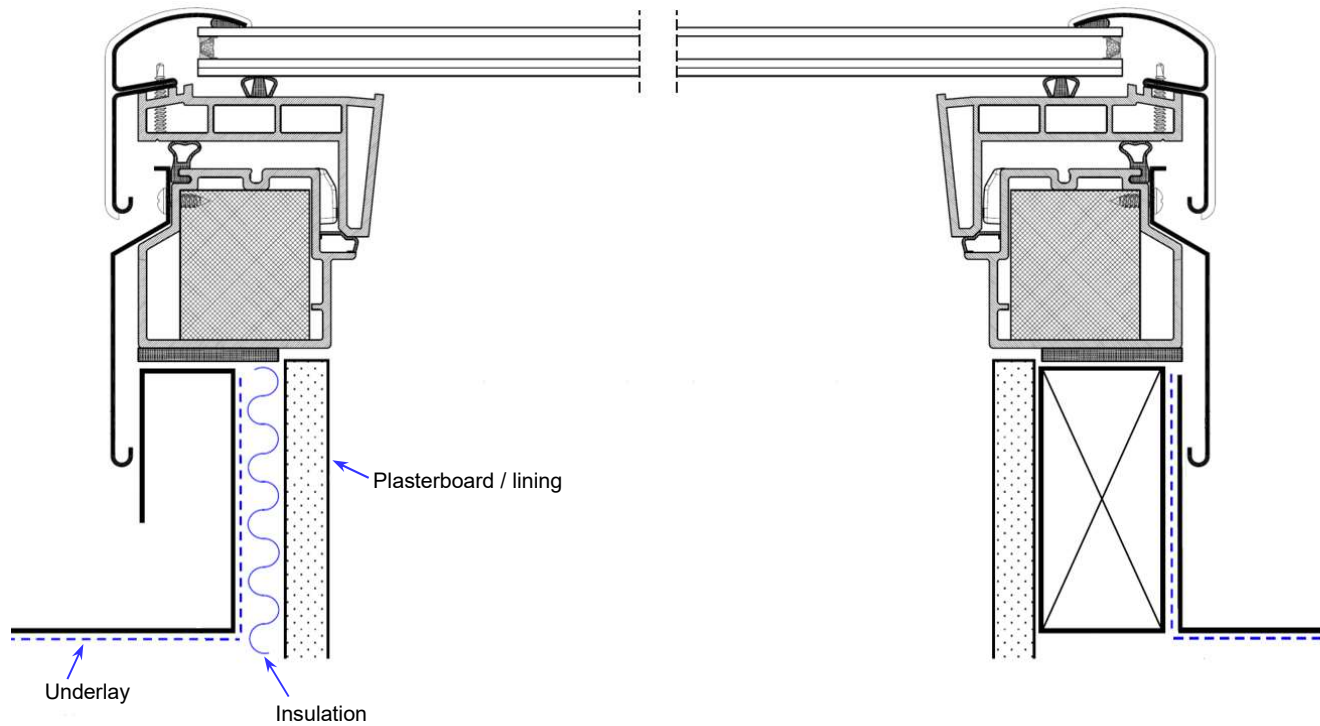
Whenever you install a Flat Roof Skylight, VELUX recommends you insulate the base and/or flashing for maximum thermal efficiency.

(VELUX does not supply insulation)

With an appropriate insulation and lining, a skylight can achieve very high thermal efficiency.

The addition of a timber curb timer will increase the overall thermal rating of the installation. However, if you are using a timber curb, insulation may not be necessary. Consult with relevant authorities for thermal efficiency requirements.

VELUX always recommends using an underlay with any type of flashing.

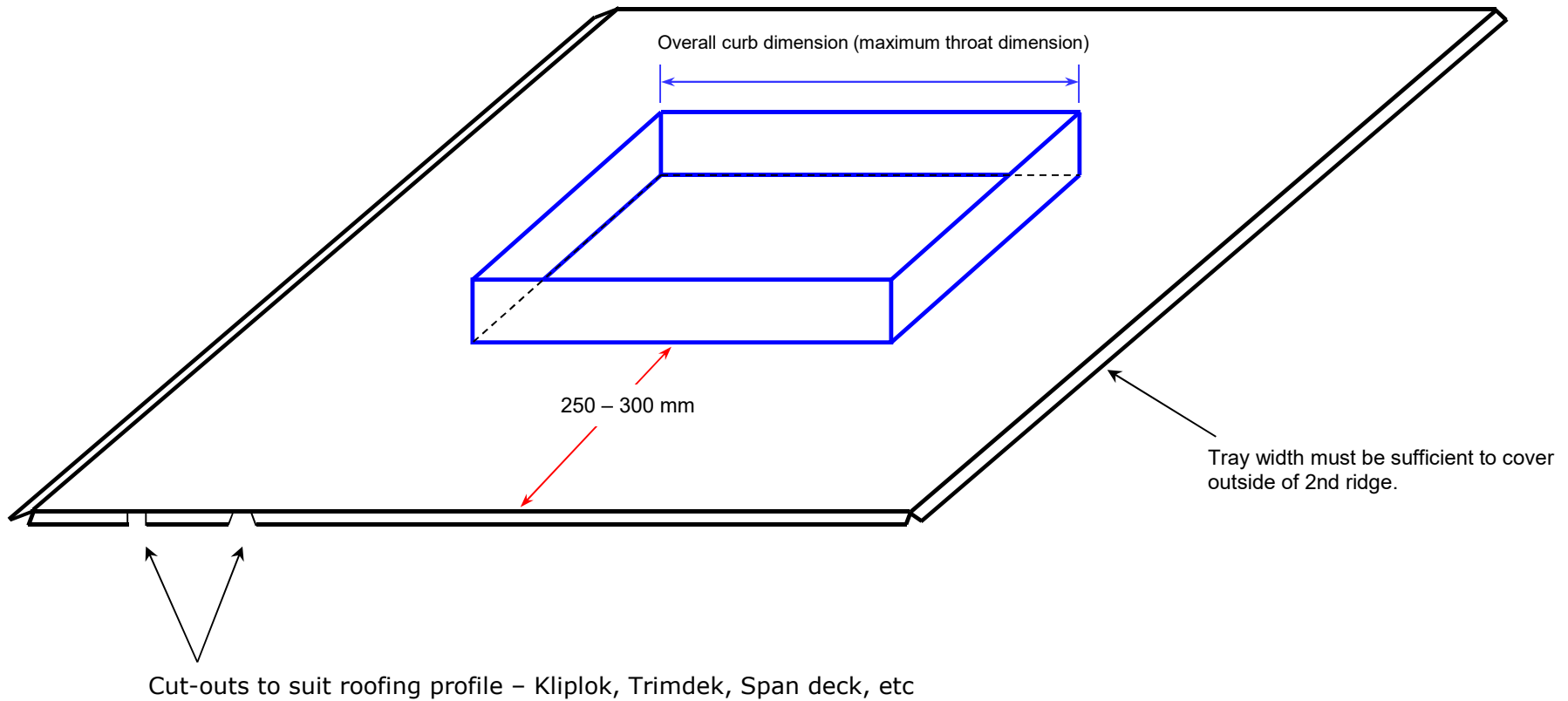


Base for timber curb

The top tray of the base can be installed:

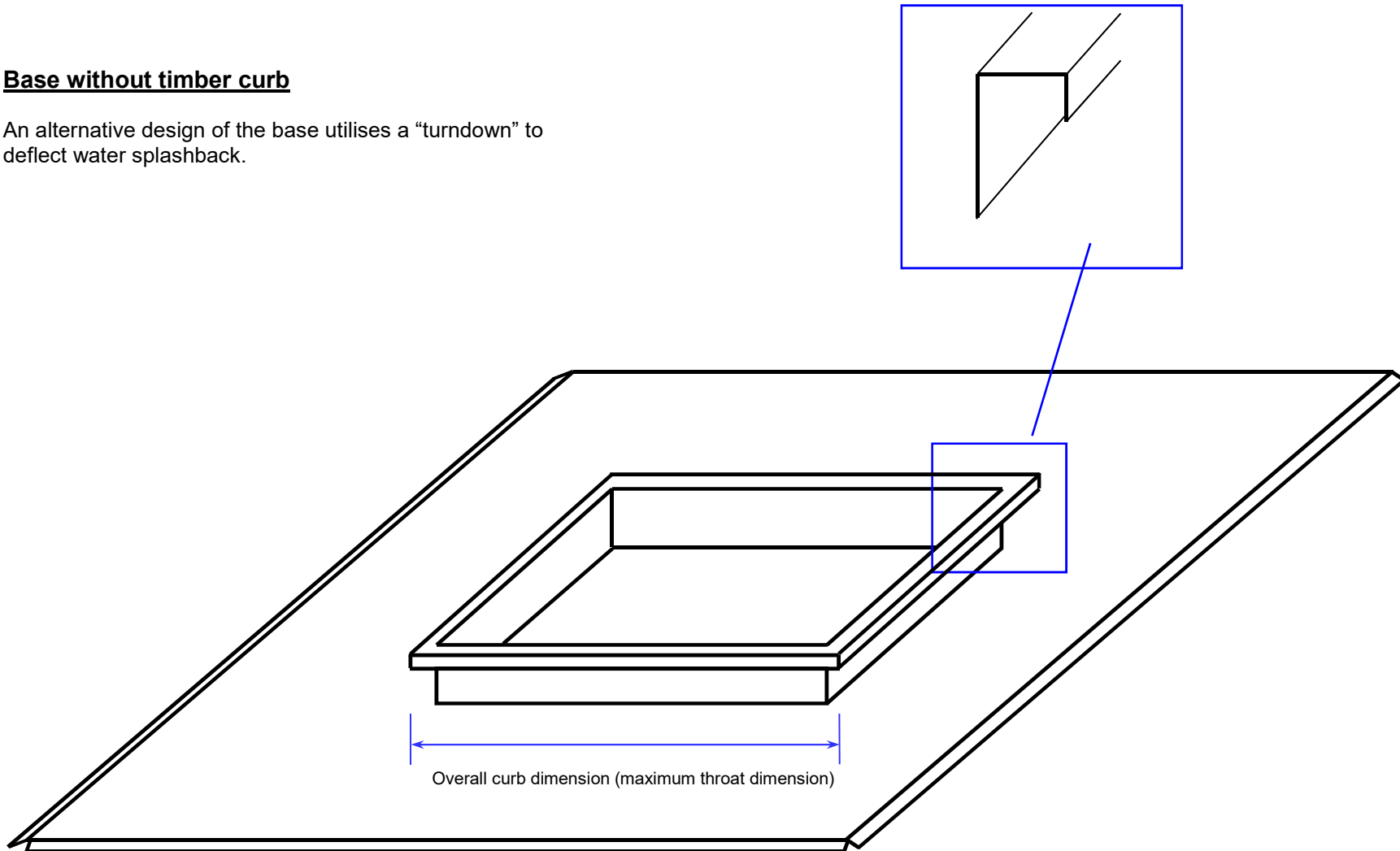
- Above the roofing - preferably all the way to the ridge capping (see diagram page 5)
- Under the roofing. The top of the base can be made as a flat panel to go under metal roofing. (see diagram page 5)

(the kickstand must suit the height of the roofing material)



Base without timber curb

An alternative design of the base utilises a “turndown” to deflect water splashback.



Bases are for illustration purposes ONLY. The 'apron' for each base must be made to suit the relevant roofing material. (as per pictures below)
eg: for a tiled roof a flexible bottom apron is recommended. The sides and top of the base should sit under the tiles and the flexible apron should sit **above** the row of tiles immediately below the skylight.



Purpose-built flashing with top tray above roofing material



Purpose-built flashing with top tray under roofing material