

Insulated angled upstand frame to install flat glass cover ISD 2093 in min 5°

Window types: CFP and VELUX INTEGRA® CVP

Problem description

The roof pitch is 0°-4° and needs to be minimum 5° to install flat glass cover ISD 2093 on top of flat roof windows CFP and VELUX INTEGRA® CVP.

Service solution

To build up an insulated angled upstand frame to raise the flat roof window to minimum 5°.

Service time

Approx 90 min.



Materials

- Timber to form framework
- Hard, fire-proof insulation material
- Wedges for roofing felt
- Screws for fastening

Tools

- Cordless screwdriver
- Power saw
- Insulation material knife

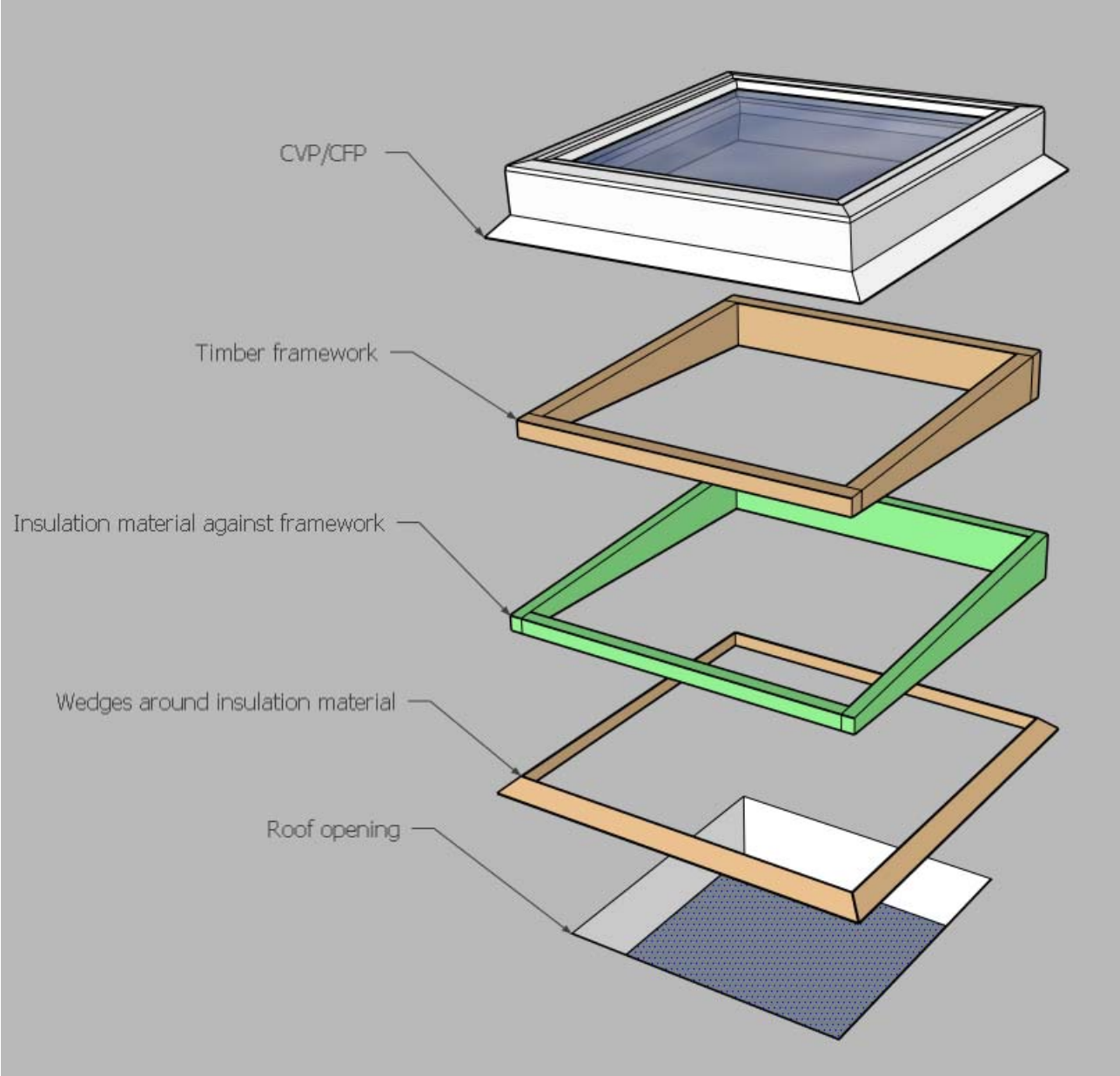


Who can perform this task?

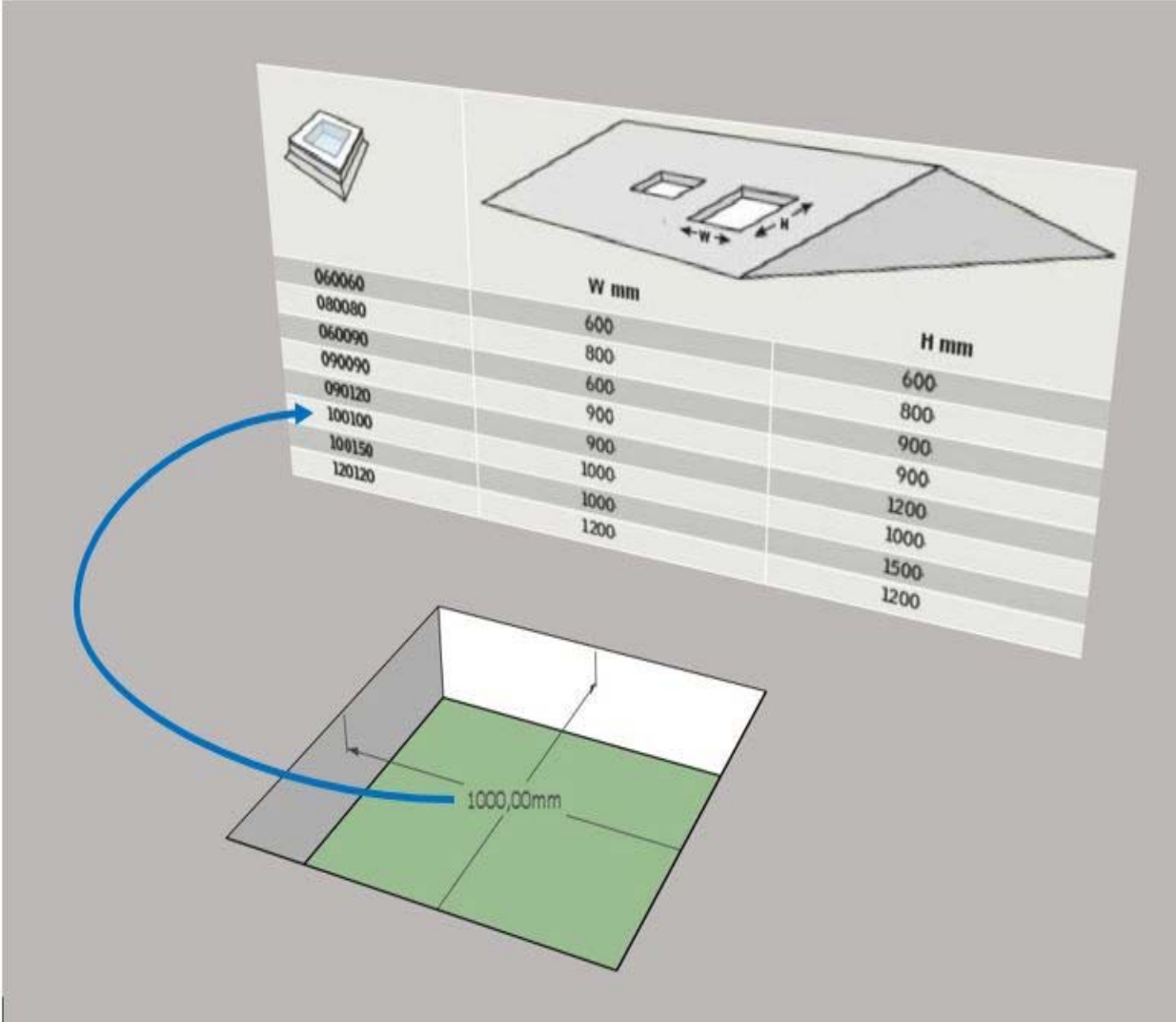
End user	<input type="checkbox"/>	Installer	<input checked="" type="checkbox"/>	Service engineer	<input type="checkbox"/>
----------	--------------------------	-----------	-------------------------------------	------------------	--------------------------

It is for the individual sales company to decide whether an installer or an end-user is capable of performing the task. If the task is given to an installer or an end-user, the sales company will still be liable for damages, if any.

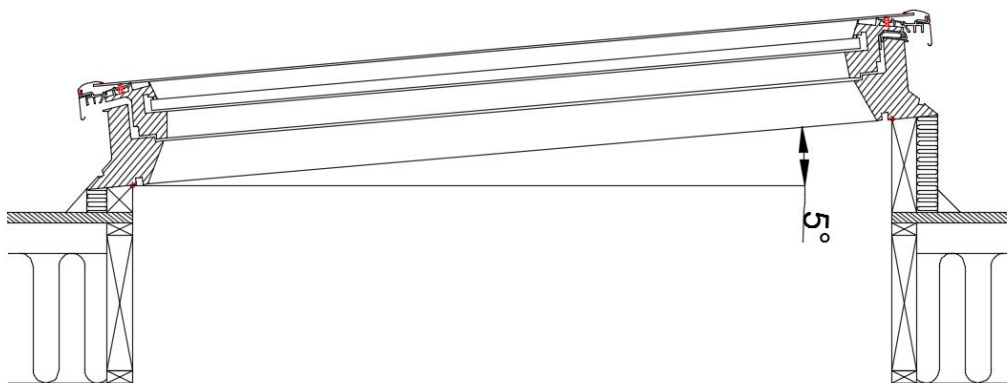
01. Components of insulated upstand frame with a window on top



02. Establish opening in the roof with the correct measurements.
Example: CFP/CVP in size 100 x 100 mm.



03. Make sure the upstand frame is raised to a pitch of min 5° (at roof pitch 0°: 88 mm/m).

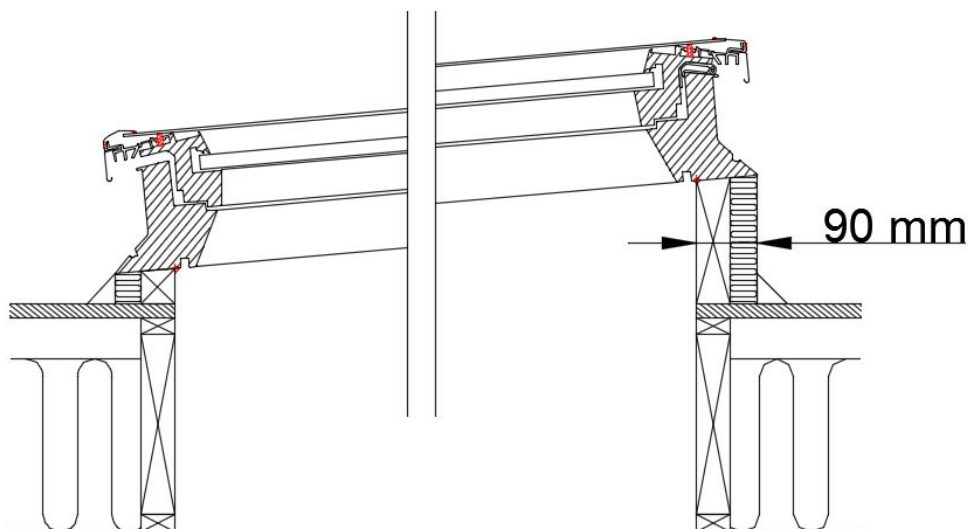
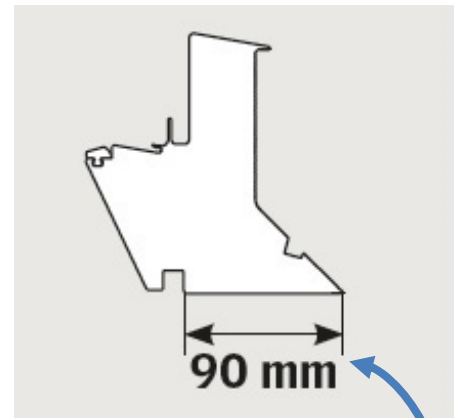


04. Prepare timber framework and insulation material (total width: 90 mm) to suit window size and roof pitch.

Measure height of timber framing to ensure an angled upstand frame of min 5°. Position the framing over the roof opening. Fix framing to roof with screws. See ill. **06**.

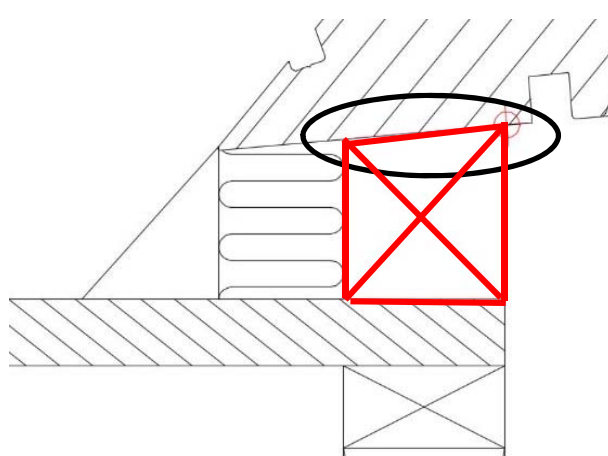
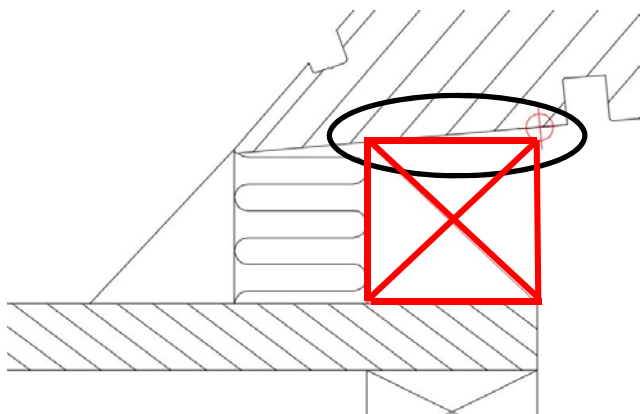
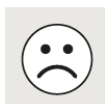
Measure thickness of insulation material (total width of upstand frame including insulation: 90 mm). Insulate outside of framing on all four sides with hard, fire-proof insulation material. Fix it with screws, if necessary. See ill. **07**.

Measure length of wedges and place them on all four sides around the insulation material. Fix wedges to roof with screws. See ill. **08**.



05. Caution

Make sure the timber framework is bevelled at bottom and top to support the whole window frame and compensate for the pressure from the CVP motor and for the deformation of the PVC profiles in general.



06. Position framing over roof opening and fix it to the roof with screws.



07. Position insulation material against the framing. Total width of upstand frame must be max 90 mm on all four sides to fit the measurements of the window.



08. Position wedges against the insulation material and fix them to the roof with screws.



09. Position window and fix it to the upstand frame in accordance with the installation instructions.



10. Apply roofing felt around the window in accordance with local standards and requirements (using a max Ø 35 mm burner).

11. Fit securing kit ZZZ 210, if required.

12. Install flat glass cover in accordance with the installation instructions.



13. Final result.

